

2014 HAVEN Annual Report



Dear Friends –

As we close the books on another successful year at HAVEN, we are quickly looking forward to the year ahead, which brings a wonderful milestone in our history. In 2015, HAVEN will celebrate our 40th Anniversary!!

NEVER DOUBT THAT A SMALL GROUP OF THOUGHTFUL, COMMITTED PEOPLE CAN CHANGE THE WORLD. INDEED, IT IS THE ONLY THING THAT EVER HAS. ~ MARGARET MEADE

In **1975**, HAVEN was founded as Oakland County's first and only sexual assault counseling program as part of the YWCA of Pontiac Michigan. In **1977**, we broadened our services to include domestic violence, and in **1979** we housed our first battered woman. Due to the growth of our programs and the increasing need for our critical services, in **1982** HAVEN officially separated from the YWCA and became an independent agency.

Since those early days, we have been fortunate to have celebrated many successes. In **1998**, HAVEN was voted Best Managed Non-Profit by *Crain's Detroit Business*. In **2014**, we received a perfect quality assessment score from the Michigan Domestic and Sexual Violence Prevention and Treatment Board (MDSVPTB), and in doing so, we became the first agency in the 14-year history of the current MDSVPTB Quality Assurance Program to score 100 percent in the core standard section and meet or exceeded 100 percent of all advanced standards.

UNITY IS STRENGTH ... WHEN THERE IS TEAMWORK AND COLLABORATION, WONDERFUL THINGS CAN BE ACHIEVED. ~ MATTIE STEPANEK

This year as we recognize our 40th anniversary, we will also celebrate our steadfast and ongoing commitment to victims of domestic and sexual violence. By the end of 2015, HAVEN will move into our new Family Justice Center. However, more than just building a new facility, we are changing the fundamental way in which we provide services (read more on page 11), and in order to make this dream a reality, we have been working in earnest to secure \$5 million in funding from individuals, corporations and foundations who are committed to ending domestic and sexual violence. Today, we are thrilled to share with you that we have successfully secured roughly \$4.5 million and construction is well underway!

COMING TOGETHER IS A BEGINNING. KEEPING TOGETHER IS PROGRESS. WORKING TOGETHER IS SUCCESS. ~ HENRY FORD

For those of you who have already made a commitment to the campaign, we are forever grateful for your dedication to HAVEN and to our future! For those of you who have yet to support the project, we ask that you take a moment to consider how you might help. Your donation will not only ensure another 40 years of high-quality programming for victims of domestic and sexual violence, but more importantly, it will go a long way towards helping us end this horrible epidemic that affects 1 in 3 Michigan families.

At HAVEN, we work each day to create a community - and a world - where individuals do not live in fear inside of their own homes. But, the truth is, last year we provided shelter, counseling, advocacy and educational programming to nearly 30,000 people. Unless something drastic happens, next year... and the year after...and the year after that...we will see these numbers grow.

To join in the crusade to end domestic and sexual violence and to learn more about how you can help, please visit www.haven-oakland.org/campaign or contact Rachel Decker, Director of Development and Capital Campaign, at 248-322-3703 or rdecker@haven-oakland.org.

ALONE WE CAN DO SO LITTLE, TOGETHER WE CAN DO SO MUCH. ~ HELEN KELLER

Sincerely,

CAROLE WINNARD BRUMM
Chairwoman



BETH MORRISON
President / CEO



2014 Board of Directors

Carole Winnard Brumm
Chairperson

Susan B. Perlin
1st Vice Chair

Marguerite Gordy
Secretary

Robbin McCain
Treasurer

Terry Merritt
Immediate Past Chair

Kelly F. Benson
Brent N. Davidson, M.D.
David Drouillard
Kathryn Elston
Monica E. Emerson
Michelle Gilbert
Donna Inch
William H. Keller
Beth Lieberman
Gerald T. Lievois
Terri Moon
Charles Moore

Martha Moyer
Marja Norris
Danielle Olekszyk
Lara Fetsco Phillip
Nina M. Ramsey
Carole Lieberman Rich
Carla J. Sarti
Susan M. Telang
Mary Ann Tournoux

About HAVEN

As Oakland County's only comprehensive program for victims of domestic violence and sexual assault, HAVEN provides shelter, counseling, advocacy and educational programming to nearly 30,000 people each year.

Vision

HAVEN, a nationally recognized nonprofit leader in Oakland County, promotes a world of safe, equal and accountable communities where sexual assault and domestic violence do not exist.

Mission

To eliminate sexual assault and domestic violence and to empower survivors through advocacy and social change in and around Oakland County.

2013 / 2014 Outcomes



HAVEN Programs

What we do and who we help



Crisis and Support Line

The Crisis and Support Line is open around the clock, 365 days per year. The support line provides crisis intervention, understanding and support, referrals and information to those affected by domestic and sexual violence. Trained counselors answered 3,818 calls and 318 online chats in 2014.

Residential Program

Our Residential Program is Oakland County's only 24-hour emergency shelter exclusively for domestic violence and sexual assault victims and their children. In 2014 we provided safe housing and therapeutic services to 173 adults and 178 children so they could leave their abusers and begin to heal.

START (Safe Therapeutic Assault Response Team)

Forensic Nurse Examiners and First Responders provide a comprehensive forensic exam and compassionate emotional support for victims of sexual assault. In 2014, these practitioners provided 160 victims with exams, therapeutic medical care, evidence collection, and emotional support.

Social Action

Advocates provide support and education for victims moving through the legal system. First Responders provide immediate crisis intervention and emotional support for victims and their families at Oakland County hospitals and police stations following an assault. In 2014, advocates helped 3,032 victims to develop a safety plan, access resources, and learn about their rights. Advocates also assisted 453 victims with personal protection orders last year and accompanied them to legal proceedings.

HAVEN Programs (Continuation)

What we do and who we help

Counseling Program

The non-residential Counseling Program serves children and adults that have been affected by domestic violence and sexual assault. Specialized groups and individual counseling provide information, support, and insight into the dynamics of abuse and the myriad of feelings and issues that accompany it. Last year, 770 adults and 120 children participated in therapy at HAVEN for sexual and domestic violence.

Prevention Education

Trained educators work with young people, their teachers and parents to equip them with the tools to build relationships based on mutual respect and to understand what consent means. Educators also provide professional training to members of the general public on the dynamics of domestic and sexual violence, and the root causes of violence against women. Last year, HAVEN educated 12,914 people through 352 presentations.

Volunteers and Interns

In 2014, volunteers and interns worked 13,211 hours through direct and indirect support in all HAVEN programs.



HAVEN Success Stories

FELICIA

Felicia* first saw her HAVEN counselor when she was 24 years old. She was a single mom without an income who had just recently left her abuser. While working with her HAVEN counselor, Felicia learned to set clear and healthy boundaries with others, cope with tremendous difficulties in co-parenting with her batterer, and feel more empowered to advocate for herself. She has since found a full-time job with the support of HAVEN and is well on her way to rebuilding her life.

GERTIE

Gertie*, a senior citizen who lived independently in Oakland County, experienced the horror of being repeatedly sexually assaulted by the same assailant, who threatened her that he would return to rape her again and again until he was caught. She came to HAVEN's Safe Therapeutic Assault Response Team (START) after the second assault. HAVEN's First Response Advocate provided support and informed Gertie of services that would assist her with her healing process. The forensic nurse provided a medical forensic examination; collecting evidence that helped the detective find the assailant. The assailant pled guilty without a trial and Gertie was able to begin the next step in her recovery.

** Names have been changed to protect the safety and confidentiality of these HAVEN clients.*



Financial Position 1.

Statement of Financial Position
September 30, 2014

ASSETS

Current Assets

Cash and cash equivalents.....	\$1,944,116
Investments.....	\$2,018,350
Inventories	\$25,426
Receivables:	
Grants receivable	\$224,722
Unconditional promises.....	\$851,241
Capital Campaign Contributions	\$304,721
Other Receivables.....	\$897
Prepaid expenses.....	\$93,779
Beneficial Interest.....	\$197,824
Land, building, and equipment at cost... (Less accumulated depreciation)	\$990,970
Total assets	\$6,652,045

LIABILITIES

Current Liabilities

Accounts payable	\$39,138
Accrued compensation	\$118,263
Deferred revenue.....	\$35,100
Total liabilities.....	\$192,501

NET ASSETS

Unrestricted:

Board Designated	\$241,422
Undesignated.....	\$2,601,102
Total Unrestricted.....	\$2,842,524
Temporarily restricted	
Capital Campaign	\$2,510,059
Time restricted	\$851,241
Specific purpose.....	\$255,720
Total temporarily restricted	\$3,617,020
Total net assets	\$6,459,544
Total liabilities and net assets	\$6,652,045

Financial Position 2.

Statement of Activities and Changes in Net Assets
for the Year Ended September 30, 2014

CHANGES IN UNRESTRICTED NET ASSETS:

Unrestricted Revenue

Federal grant revenue	\$1,281,601
Other grant revenue.....	\$496,197
Fundraising activities	\$372,740
Contributions	\$28,135
In-kind contributions	\$324,180
Interest	\$29,906
Fees and other	\$10,524
Unrealized and realized gain on investments	\$68,962
Total unrestricted revenue	\$2,612,245
Net assets from restrictions	\$740,624
Total unrestricted revenue and other support.....	\$3,352,869

EXPENSES

Program services	\$2,807,115
Supporting services	
Administration and maintenance	\$149,625
Development	\$348,078
Capital Campaign	\$591,615
Total supporting services	\$1,089,318
Total expenses	\$3,896,433

NET INCREASE (DECREASE)

IN UNRESTRICTED NET ASSETS

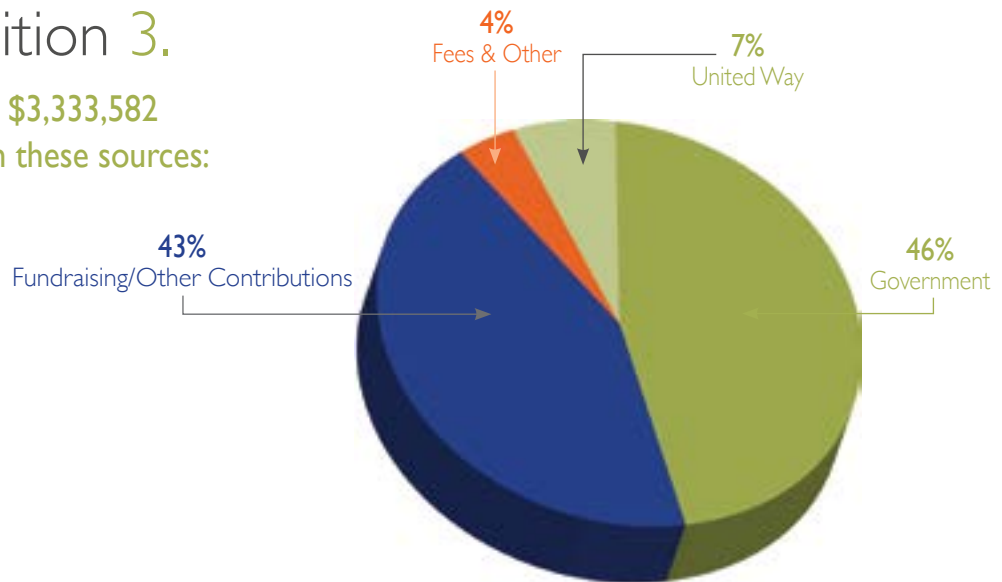
Change in temporarily restricted net assets

Contributions	\$1,055,337
Capital campaign contributions.....	\$2,052,955
Capital campaign related interest.....	\$849
Capital campaign in-kind contributions.....	\$82,418
Net assets released from restrictions	(\$740,624)
Net increase (decrease) in	
temporary restricted net assets	\$2,450,935
Change in net assets	\$1,907,371

Net assets – beginning of year	\$4,552,173
Net assets – end of year	\$6,459,544

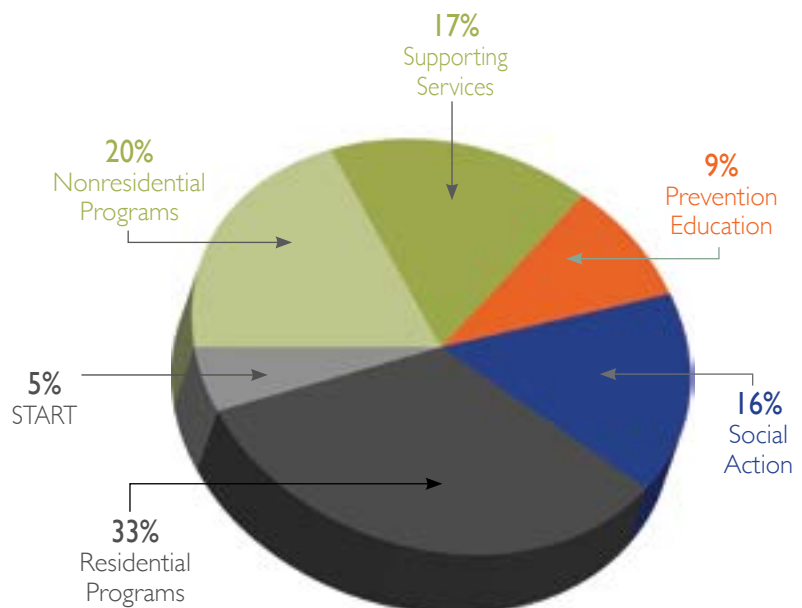
Financial Position 3.

In 2014, HAVEN raised \$3,333,582 in operating funds from these sources:



Financial Position 4.

In 2013, HAVEN spent \$3,304,816 on operations:



Who supports and pays for HAVEN's services?

There are no charges for victims.

Crisis Services

2014 Costs: **Over \$2.1 million**

Government Funding: **58%**

Private Donations: **39%**

Moving Out of Crisis

2014 Costs: **\$452,000**

Government Funding: **70%**

Private Donations: **Just under 27%**

Client Sliding-Scale Fees: **0.5%**

Prevention Education

2014 Costs: **\$276,425**

Government Funding: **32%**

Private Donations: **60%**

Presentation Fees: **Just under 3%**

HAVEN Programming Updates

- Our Counseling Program added a Mindful Parenting session to help mothers and children heal from domestic violence.
- We joined the newly formed Oakland University Violence and Abuse Resource Consortium. This clearing house for anti-violence information benefits HAVEN because it connects students, faculty, and practitioners who are all engaged in anti-violence work.
- We began a new partnership with Lakeshore Legal Aid funded by the Federal Office on Violence Against Women and the U.S. Department of Justice. Through this partnership, specially trained staff served 49 survivors of sexual assault with their civil legal needs including child support/spousal support, custody, wrongful termination and more.
- We expanded our volunteer corp by adding a program through which trained, professional volunteers provide career counseling to clients.
- With information gained at the Advocacy Learning Center in Minnesota, HAVEN staff began conducting listening sessions to address barriers related to victims of domestic and sexual violence accessing services.
- Two of HAVEN's Sexual Assault Nurse Examiners earned certificates in advanced strangulation identification. Precise identification of strangulation injuries aid in prosecuting and convicting people who commit this crime.
- HAVEN's Diversity Team hosted specialized trainers who helped staff learn how to better serve Hindu survivors.
- A Leadership Institute was formed internally and provided participating staff with opportunities to increase leadership skills and improve mentoring.
- 214 families, including 503 children participated in our 28th Annual Gift Giveaway. New, unwrapped gifts were collected, and individuals who received HAVEN services in the past year were invited to select special gifts.

Interesting HAVEN Stats!



We provided 51 care packages of household items to families who found independent housing, thanks to our community partners!



We helped 45 children staying in our Residential Program to enroll in school.



Our Social Action First Responders logged 22,545 miles.



We provided clients with 2,000 bus tickets to help them get to and from school, work and important appointments.



We utilized the language line for help with translation services for 46 clients in the following languages: Spanish, Cantonese, Arabic, Farsi, Mandarin, Vietnamese, Korean and Hindi.



We provided 30 gas cards to clients who needed help paying for the gas necessary to get to and from HAVEN facilities.

Plant the Seeds of Hope



Since 2010, HAVEN has been diligently striving towards a new, more effective way to treat and prevent domestic violence and sexual assault. We are thrilled to share that our dream is nearly a reality!

In the fall of 2014, we broke ground on a 36,000 square foot facility that will provide comprehensive services for victims, their children and the community. Far from just bricks and mortar, HAVEN's new home will transform the way we work and, more importantly, the way we assist victims of domestic and sexual violence. Not only will all of HAVEN's services now be offered from one main location, but we have also worked to strengthen partnerships with law enforcement, legal services, health care providers, employment resources, transitional housing and many others in order to bring additional services directly to our clients. Our new facility will literally wrap victims and their families in the help they need to transition from fear and dependency to safety and independence.

While we are extremely proud of our accomplishments, we are also incredibly grateful for the outpouring of financial support we have received from hundreds of caring community members. As we kick-off 2015, we have raised roughly \$4.5 million of the \$5 million needed to make our dream come true. With only \$500,000 left to raise, we are confident that additional community members will step forward to partner with us on this exciting endeavor. There are many opportunities to participate at all levels of giving...from \$5 to \$500,000 your gift will directly impact our efforts and, more importantly, will help save a life.

To help us build a new HAVEN, please contact Rachel Decker, Director of Development and Capital Campaign at 248-322-3703 or rdecker@haven-oakland.org. You can also learn more at www.haven-oakland.org/campaign.

We look forward to welcoming you to 801 Vanguard Drive later this year!

HAVEN

Gratefully Acknowledges the Following Contributors
to our Plant the Seeds of Hope Campaign.

Their Extraordinary Generosity is Helping to Make Our Dream a Reality.

\$1,000,000+

Clare B. Dusevoir Trust

\$250,000 - \$999,999

Kresge Foundation

McGregor Fund

\$100,000 - \$249,999

Carls Foundation

Detroit Lions Courage House

Greg and Julie Erne

General Motors Foundation

The Masco Foundation

\$50,000 - \$99,999

Cooper Standard

DMC Fund

Debra A. Glendening

The Hearst Foundation

The Jewish Fund

Sarah and Mick McClelland

Monni Must

Phyllis D. Korn Living Trust

Verizon Wireless

Vigilanti Security

Kathy White

The Young Foundation

\$25,000 - \$49,999

Art Van Furniture

The Baskin Family Foundation

Karen and Ken Dallafior

Deroy Testamentary Foundation

Ford Motor Company Fund

\$25,000 - \$49,999 (Continuation)

Giamarco, Mullins and Horton, PC

Lear Corporation

Marja and Jerry Norris

Brad Simmons

Dave and Kappy Trott

Carl Camden and Julia L.Wargo

\$10,000 - \$24,999

Barbara Allushuski

Suzanne Baber

Leslie Banas

Christine A. Beck & Dana M. Locniskar

Dr. Rose M. Berberian

Lisa Brown

Sue Brown and Ashley Paddock

Carole Winnard Brumm & Gregg Brumm

William Canney

Cherri, Decker, Fray, Gardner & Kelly

Denise Christy

Elaine Coffman

Kimberly Dickens

Doe Day Golf Outing

Linda Dresner and Ed Levy

Sharon and Glen Fayolle

Herman Miller, Inc.

Phil Incarnati

Donna Inch and Laura Inch

Kathy White Aerobics

Cheryl Korpela

Ladies of Conway MacKenzie

Ladies of Ernst and Young

LeGris-Marcero-Uetz

Beth Lieberman



\$10,000 - \$24,999 (Continuation)

- Mary Ann and Gerald Lievois
- Lila Cherri Foundation
- Victor Mack
- Machelle A. McAdory
- Robbin and Scott McCain
- Terry Merritt
- Teri and Chuck Moore
- Jim and Trish Moritz
- Beth Morrison
- The Northern Trust Company
- Danielle Olekszyk
- Pepsi Beverages Company
- Sue Perlin
- Nina and Ron Ramsey
- Ruby McCoy Foundation
- Carla J. Sarti
- Mary Beth Seger
- Marjorie K. Simmons
- Susan and Raj Telang
- Deb Thorpe
- Mary Ann Tournoux
- Lori and Dave Wathen
- Sherry Welsh
- Barbara Whittaker
- Pamela Wyett
- Women Equity Partners of Honigman
- Women Partners of Plante Moran
- Women for SHOES
- The Women's Fund of the Community Foundation of Greater Rochester

We Gratefully Acknowledge Our Annual Fund Supporters: 10/1/2013 - 9/30/2014

\$50,000 +

Detroit Lions Courage House
Federal Home Loan Bank of Indianapolis
McGregor Fund
United Way for Southeastern Michigan

\$10,000 - \$49,999

Ally Bank
Anonymous
Bank of America Charitable Foundation Inc.
Ciena Healthcare
Clare Dusevoir Trust
Conway MacKenzie
DeRoy Testamentary Foundation
FirstMerit Bank
Ford Motor Company Fund
Ford Motor Credit Company
Gannett Foundation, Inc.
General Motors
Health Alliance Plan
Edward & Sharon Karas
Kelly Services, Inc.
Lear Corporation
Magna International
MGM Resorts Foundation
Michigan State Bar Foundation
Pepsi Beverages Company
SRG Global, Inc.
Towers Watson
Tuktawa Foundation
Verizon Wireless
Young Foundation

\$5,000 - \$9,999

AISIN World Corp.
Alix Partners
Anonymous
Beaumont Hospitals
Community Foundation for SE MI
Cooper Standard
DTE Energy Foundation
Kathy & Jeff Elston
Federated Campaign Stewards
Flagstar Bank
Frank Rewold and Son, Inc.
Honigman Miller Schwartz & Cohn

Independent Insurance Agents of Oakland County
Kolo Charities
Level One Bank
John R. & Nancy Ludwick
Lyon Foundation
Meritor, Inc.
Michael & Peggy Pitt Charitable Trust
Molly Maid of Birmingham
Netlink Software Group America, Inc.
Northern Trust Bank
Susan B. & Lawrence E. Perlin
Queen Quality Laundry Co.
Rochester Hills Chrysler Jeep
Robert & Janice Ross
St. John Health System Providence
Stantec
Stucky Vitale Architects
Taubman
Tenon Group PC
The Private Bank
UBS Financial Services, Inc.
United Way of Metropolitan Dallas
Universal Fire and Casualty Insurance Company
Zonta Club of Pontiac- North Oakland

\$2,500 - \$4,999

Ann & Mike Rosenthal Family Foundation
Joseph T. & Sandra L. Aoun
Suzanne L. Baber
Birmingham Bloomfield Newcomers Club
Comerica, Inc.
Donald M. Crawford & Susan Lundal
Elizabeth L. & Richard I. Cushman
Dennis & Shelley Fiore - MassMutual Michigan Metro
Detroit Industrial School
Detroit Red Wings Foundation
Dickinson Wright PLLC
William Diehl
Dykema Gossett PLLC
EILEEN FISHER
Karol Foss
Patricia Freeland
Carol A. Friend
Bruce & Joanne Godfrey
Ron Goodman
Himmel Foundation

Ben & Susan Jackson
Jackson National Life
KPMG
Laurie Lang
Edward C. Levy & Linda Dresner Levy
Robbin & Scott McCain
Mercedes-Benz Financial Services
Michigan State Medical Society Foundation
Michael & Candice B. Mihalich
James M. & Patricia E. Moritz
Network For Good
Marja & Gerald Norris
Oakland Casual
Danielle & Jason Olekszyk
PepsiCo Foundation
Plante & Moran, PLLC
Daniel L. & Gail A. Rabahy
Sharon M. Richard
Howard S. Rosman & Sarine John-Rosman
Safe Harbor for Women
St. Joseph Mercy Oakland
Matthew Stafford & Kelly Hall
Kevin P. & Lydia E. Stutler
The Women's Fund of the Community Foundation
of Greater Rochester
Donald L. Tocco
Village Of Lake Orion
Vitec, LLC
Wal-Mart Foundation
Dave M. & Lori Wathen
Warren G. & Cathy C. Wood

\$1,000 - \$2,499

Acro Service Corporation
Gretchen M. & Thomas E. Anderson
AT&T Foundation
AT&T United Way / Employee Giving Campaign
Attorneys Title Agency
Kathy & Steve Ball
Bank of Birmingham
Judith L. Bateman
Kelly F. Benson
Jane Bowman
Brenda & Jim Bradley
Karen L. & Mark Burstein
Carnegie Institute, Inc.

\$1,000 - \$2,499 (Continuation)

John & Joanne Carter
Betsy & Michael Chen
Christ Church Cranbrook
Clannad Foundation
Club General Motors
Michael P. & Janice M. Corrigan
Crestmark Bank
Jon P. Dady & Jane Bowman Dady
Brent & Karen Davidson
Mary A. Dery
Marianne Dwyer
Monica Emerson
Julie & Greg Erne
Stuart & Bonnie Etengoff
Faurecia North America
Glen & Sharon Fayolle
Finit Solutions
First Presbyterian Church
First United Methodist Church of Birmingham
Francis J. & Meg Fleck
James & Alice Forrest
Four Seasons Garden Center
Elizabeth Frost
General Motors Purchasing
GKN Driveline North America, Inc.
Debra A. Glendening
Meg & Thomas Gordy
Graystone Security & Protection Service
Great Lakes Crossing Outlets
Greektown Casino-Hotel
Allen J. & Denise R. Greenway
Grimaldi Foundation
Rene M. Hansemann
Henry Ford Health System
Alex H. Hepfner
Leslie Hinson
Annette & Edward Holder
IBM Employee Services Center
Islamic Association of Greater Detroit
David Jackson
Mark A. & LaTonya Jackson
James and Lynelle Holden Fund
Pamela D. Johnson
Debra L. Jordan
JP Morgan Chase & Co.

Patricia M. Kasiewicz
John P. Kotas
Nicholas & Kori Kozak
Kamlesh Kumari-Lobo
Lawrence N. Larson
Brenda L. Lawrence
Vicki Liebowitz
Life Renewal Church
Lincoln of Troy
Lowe Campbell Ewald
Peter R. & Mary T. Mahu
Main Street Bank
Mann Family Foundation
Terry Merritt
Michigan Reproductive Medicine
Chuck & Teri Moore
Valencia Morris
Beth Morrison
Carol T. & David B. Morton
Motown Soup
Teresa & Greg Mulawa
Matthew Murphy
Gregory V. & Bridget M. Murray
Laura & Chuck Nadeau
National Christian Foundation of Eastern Michigan
Craig Newmark
North Congregational Church
North Hills Christian Reformed Church
Patricia O'Neill
Orchard Lake Community Presbyterian Church
Sheri & Todd Pawlik
Pepper Hamilton LLP
Piston Group
PNC Bank
PTA of IA East
Barbara A. Quilty
Nina M. & Ron Ramsey
Stephen E. & Jeannine M. Rawe
RBS Citizens
Renaissance Unity
Gwen M. Rhodes
Rochelle & Randolph Forester Foundation
Rochester Community School District
John A. & Mary Grace Rowlands
Roy G. Michell Charitable Foundation & Trust
Kathryn Rundell

William P. & Donna M. Sanders
Shelter Alliance
Brad M. Simmons
Marjorie K. Simmons
Bernard L. & Agnes Smith
St. Andrew's Episcopal Church
St. Mary Catholic Church
Joyce Stuart
Ross & Ann Stuntz
Talmer Bank and Trust
Susan & Raj Telang
The Bon-Ton Stores, Inc.
The Daniel Foundation, Inc.
Mara R. Topper
Mary Ann & Kenny J. Tournoux
Travelers Community Connections
Trinity Health
Marilyn & James Tutorow
United Street Machine Asso.
United Way of Greater Milwaukee
Peter S. & Carol A. Walters
Frederick F. & Mary Ann Wendell
Wilmot F. & Wanda Wheeler
Barbara L. & David Whittaker
Carole Winnard Brumm & Gregg Brumm
Marvin I. Wolf
Jon Wolman
Todd & Pamela Wyatt
Wylie E. Groves High School
Christine & Bill Wyzer

\$500 - \$999

Achatz Handmade Pie
Thomas J. & Elizabeth G. Alexander
Roger & Tamra L. Arens
Associated Community Services
Evelyn R. Barrack
Beacons of Hope
Antonia Beaubien
A. Lori Beirne-Kennedy & Jon Kennedy
Gerald & Karen Beltry
Big Beaver UMC
Paula Biskup
Marianne & Paul Brakora
Brotherhood of Maintenance of Way Employees Division
Avis M. Broussard

We Gratefully Acknowledge Our Annual Fund Supporters: 10/1/2013 - 9/30/2014

\$500 - \$999 (Continuation)

John Budreau
Burton Katzman
Mary Jo & Roger C. Byrd
Ruth B. & Robert Carrigan
Mindy Cherney
Gerald M. & Rena S. Chernow
Denise L. & Russ Christy
Chrysler Advance Stamping Manufacturing
Engineering
City of Farmington Hills
Amy Cronin
Kenneth & Karen Dallafor
Deneweth, Dugan & Parfitt, P.C.
Detroit Area Corvair Club
Brian & Debra S. Dietz
Elizabeth A. Dillon
Donald & Jo Anne Petersen Fund
David Drouillard
Seema Dulai
Thomas A. & Dorothy Dunne
Farmington Hills Church of God
Nancy & Boyd Farnam
Linda & Terry Fiscus
Virginia B. Fox
Michael J. & Nancy A. Frawley
Freddie Mac Foundation
Belinda Friis
Jane Gardner
Thomas C. Goad
Holly Griffith
Donna Gross
Groves High School
Kevin & Cassie Hand
Kristin Handley
Michael & Liz Hausman
Helppie Family Charitable Foundation
Jennifer Hichme
Kathy B. Holmes
Steve & Cheryl L. Howell
Donna Inch
Industrial Bag & Specialties
Kimberly Jackson
Christopher S. & Sarah A. Jones
Leanna & Gary Kavanagh
William L. Keller

Kimberly Jackson Business Support Services LLC
Thomas A. & Kathryn Klingler
Kroger
Monique R. LeGris
Christopher & Christina Letts
Patricia Little
David & Marilyn Lochner
Jim Luckey
John W. & Linda W. Luther
Carole Condevaux MacLean
Ann F. Maguran
Alicia Masse
Barbara J. McCarter
Leo & Alice McIntyre
David G. & Reiko McKendry
Meadowbrook Congregational Church
Devika & Pradeep Mehra
Kevin & Carolyn Miller
John J. & Kandy J. Molesphini
Morgan Stanley
Ms. Molly Foundation
Kevin & Mary Mulhall
Lesa Nash
Jaspal Neelam
New Hal, LLC
Orchard Pediatrics, P.C.
William H. & Karen A. Ording
Linda M. Orlans
Armando & Joan Ortiz
Ashley Paddock
Lindsay Pavkovich
Janet Peceny
Lara Fetsco Phillip & Lincoln Phillip
Helene Phillips
Lawrence D. & Nancy W. Piotrowski
Ellen K. Poe
Preede Foundation
Phillip Rodriguez
Daniel G. Romano
Fredric E. & Susan J. Roth
Susan W. & Darrel M. Schwandt
Anthony J. Scooros
Ruth Share
Alfredo Silva
Sixth Judicial Circuit Court
David & Shannon Sokol

SuSu Sosnick
St. Paul United Methodist Church
St. Stephen's Episcopal Church
Craig Strombom
Janice L. Suchan & Kevin Finn
The McGraw-Hill Companies
Thrivent Financial for Lutherans
Mary Ellen Tonis
Pamela R. Travis
UBS Employee Giving Programs
United Way Monroe County
United Way of Greater Philadelphia
United Way of Rhode Island
Lawrence J. Usher
Versa Development
Kathleen A. & Robert J. Walsh
Joan B. Wells
Todd H. & Julie A. Wells

\$250 - \$499

AAUW Birmingham Branch
Academy of the Sacred Heart
Advent Episcopal Church
Asir U. & Jane Ahmad
Faris K. & Leslie Ann B. Ahmad
Allstate Giving Campaign
Ally Bank
American Federation of Government Employees
American Specialty Oil Co
John B. & Peggy A. Aoun
Arash & Carmen Armin
Barry & Fran Babbitt
Beverly Barra
Geraldine Barrons
Rose M. Berberian
Suzanne K. Berletich
Leslee Beszka
Kanta J. Bhambhani
Amy Blacklock
Christina Blevins & Michael Barlow
Jason Borregard & Amanda Bogard
H. James & Mary E. Boyes
Richard J. & Beverly Buzinski
William Canney
Geraldyn & Ken Ceci
Central Woodward Christian Church

\$250 - \$499 (Continuation)

Camellia Cherri
Kathy & Robert Chiaravalli
Christ the Redeemer Catholic Church
Church of the Holy Family
Church of the Resurrection
CKC Public Relations, LLC
Clarkston Community Schools
The Clorox Company Foundation
Carrie E.V. Copeland & Knoll Larkin
James & Christina Cotelingam
Julie Curtin
Jean Dalton
Kimberly A. Daniels
Kenneth DeCan
Kevin Denha
Linda Dillon
Anne J. Doyle
Rohena & Gaurav Dua
Etkin Equities
Farmington Hills Emergency Preparedness Commission
Fenner Melstrom & Dooling, L.L.P.
Alan J. & Sharon Ferrara
Jim Fields
Scott Findling
First United Methodist Church of Troy
Maureen Francis
Cara & Brad Gardner
Gilbert Gerhard
Yousif Ghafari
Gilbert C. Goode
Dean & Nina Googasian
Robert Goren
Gregory & Cynthia A. Goris
Judith A. Graham
Tony Gramer
Tom & Elizabeth Griffith
Jeanne Hackett
Carissa Hagen
Dennis & Christine Harder
Ellen Harris
Patricia E. Harris
HealthQuest Management
Judi Helm
Cheryl Herba
Joan Hinkle

Helen Hummel
Edward B. Hurley
Inner Door Center
Interstate Title, Inc.
Thomas & Geri Jablonski
Brandon & Mary Jacobs
Josh Jaime
Yasmeen Jasey
Jawood Healthcare Solutions
Hans Johnson
Charles A. Joseph
JP Morgan Chase Foundation
Rhonda Kirchoff
Sara Kruse
Kubien Wealth Management
John C. & Victoria M. Lange
Mark A. Lantz
Laurel Women's Medical Group
Learning Care Group HR
Mark & Lindsey Lebovitz
Lolita Lenoir
Beth Lieberman & Michael Applefield
Judith T. & Peter M. Lipinski
Carol & Larry Litrich
Mary Louwers
Yvonne Lovins
Ashley Lowe
Scot & Rebecca A. Lund
Timothy & Carol Madden
Kirk N. & Kathy Martin
Patrick J. Mason
Kelli B. Matthew
Lance & Susan McCracken
Michael S. & Mary Jo Mersol-Barg
Jennifer Mihalick
Craig & Barbara Minbiole
Daniel Minkus
Tony Mitchell
Modern Obstetrics & Gynecology
Morgan Stanley Annual Appeal Campaign
Traci Morrison
Martha R. & Mark Moyer
Brian P. & Martha A. Murphy
Lynn C. Myers
New To You Shop
Newman AME Church

Oakland County Credit Union
Oakland University Professionals
Julia E. & Phillip J. O'Brien
Mark Ode
One in Four - Wayne State University
Paint Party Royal Oak
Margie & Tom Parker
Helen Persinger
Emily Petrovski
William J. & Lynne C. Pfannes
Hubert W. Pipkin
Annis V. Pratt
Presbytery of Detroit, Inc.
Progressive Casualty Insurance Company
Steven & Carol Pyykkonen
Kevin C. Rettich
Thelma L. & John J. Riccardo
Janet Richardson
Richner & Richner, LLC
Barbara E. & Thomas J. Roach
Deborah Roelofs
Yvonne Rogers
Mariana Rojas-Karami
Lynda Ronie
Royal Oak Lions Club
Elmer & Jean Ruppman
Shelley Sapick
Donald S. & Margaret J. Sarna
Monika Sata
Bluma & Robert Schechter
Elizabeth A. Schensky
Judith Schwarzer
Iain & Alice J. Scott
Ronald C. Sheets
Lewis A. & Beverly Siegel
Robert M. & Eleanor A. Siewert
Kimberly A. & Doug Sinclair
Teresa Skupinski
Marilyn Smith
Michele Soble
Sorenson Communications, Inc.
St. Anastasia Church
St. Anne Church
Ann Steglich
David Stobb
Mark Stolarski

We Gratefully Acknowledge Our Annual Fund Supporters: 10/1/2013 - 9/30/2014

\$250 - \$499 (Continuation)

Stonycroft Hills Club Womens Golf
 Kathleen T. & Bradley Strader
 Jason A. & Kelsey V. Switzer
 Sylvan Lake Lutheran Church
 Barbara A. Taylor
 Richard C. & Ellen B. Taylor
 The Clorox Company Foundation
 Jason & Melinda Thomas
 ThyssenKrupp System Engineering
 Truist
 United Methodist Women - Waterford Central
 United Way of Central & Northeastern Connecticut
 United Way of Central Indiana, Inc.
 United Way of Greater Portland
 United Way Suncoast
 Paul J. & Cynthia R. Van Tiem
 Stefano & Martha Vannelli
 Tania L. Velinsky
 Claude Vinegar
 Lewis R. & Kathryn H. Walterhouse
 Jerrold R. Walton
 Jenny Webb
 Susan H. Weed
 Steven & Lori D. Weisberg
 Kathleen M. & Bill White
 Michael P. Williams
 Lynn K. & Mark A. Wilton
 Thomas P. Wolfe
 Catherine Yee-Agacinski
 Michael J. & Jeanne Yocum
 Julie & Ronald Yolles
 YourCause, LLC
 Cynthia Zimmer
 Geoffrey & Lisa Ziulkowski

Under \$250

Cherie D. & Henry J. Abbey
 Steven A. Abdelnour
 Ann R. Abdo
 George Abraham
 Janet Acheson
 Nancy C. Adair
 Ann E. & William M. Adams
 Margaret Adams
 Karen Adcock

Anthony A. Adeleye
 James T. & Deborah H. Adsit
 AFL-CIO Local 494 - Office & Professional
 Employees Union
 Jill Agusti
 Marc W. Ahlquist
 AIG Chartis
 Anthony S. & Barbara Albanese
 Kay & Roger K. Albertie
 Joel J. Allen
 Linda S. Allen
 Audrey L. & Brian S. Almquist
 Alpha Chi Omega
 Alpha Epsilon Phi Sorority
 Tom Althoff
 Lily Ambrosio-Ylen
 American Express PAC Match
 Irene A. Anbender
 Dennis L. Andersen
 Kim E. Anderson
 Lana Anderson
 Sara L. Andonian
 Lee A. Andrea
 James P. & Roberta M. Andrews
 Sharron A. Andrews
 Amy Anger
 Elizabeth M. Angott
 Terri Ankawi
 Antioch Lutheran Church WELCA
 Joel D. Applebaum
 Heather & Steven S. Armstrong
 Roslyn Aronow
 Donald H. & Marjorie Arsen
 Sydney Ashcraft
 Dena Asher
 Elaine M. & William L. Asher
 Zachariah Ashley
 Aspen Interiors
 Dominic J. Asta
 AT&T
 Nancy Atchison
 Robert & Pamela Audette
 Patricia Auer
 Kathleen A. & Robert Austin
 Howard & Lolly Averbuch
 Avon Automotive

Jerome X. Avrushin
 Sharon Backstrom
 Amit & Reecha Bahl
 Jennifer A. Baibak
 Marva Baier
 Douglas P. Bajor
 Ruthann A. Bajorek
 Mary Baker Berry
 Christina Baker
 John D. & Susan D. Baker
 Kristin R. Baker
 Lynn M. Baker
 Thomas D. & Theresa Baker
 David & Juliane Bakos
 David Ball
 Stephen J. & Susan A. Ball
 Hilary A. Ballentine
 John S. Balon
 Michael J. & Janice E. Baltosiewich
 Virginia Bambrough
 Bank of America United Way Campaign
 Virginia M. Baptist
 Rosann Barak
 Betty Barbee-Clements
 Julie Bardelli
 Cynthia Bardel-Switlik
 Craig & Jennifer Barker
 Colleen Barkham
 Mari Barnett
 Robert & Sonny Barnett
 Howard S. & Nancy M. Baron
 Linda Barrows
 Richard M. & Robyn M. Barsalona
 Y. Gladys Barsamian
 Robert Bartlett
 Lori P. & Glenn A. Barton
 Dennis J. & Deborah M. Basierbe
 Eliezer & Pnina Basse
 Jennifer Batchelder
 Frank & Lindsay Bateman
 Delores Baxter
 Rosemary Bayer
 Beth Beal
 Jean M. Bean
 Lisabeth P. Beattie
 Patricia & George J. Beaujon

Under \$250 (Continuation)

Rachel Becker
Anita & William Beem
James A. Beitel
Shirley Belcovski
Harvey & Kay A. Bell
Joanne B. Bellet
Lauralyn E. & Samuel Bell-Guzzo
Robert J. & Lynn A. Bendzinski
Mary Jane Benenson
Hugh H. & Catherine Benninger
Michael Bennion
Lois Benson
Richard H. & Shirley A. Bentley
Carol A. Bentz
Dennis M. & Gay M. Berg
Wendy Berg
Ragnar & Denise Bergethon
Gail & Larry Berkove
Laura Berman
Karen A. & Robert I. Berry
William & Joan Berry
Bethel United Church of Christ
Kelly Bialk
Jennifer A. Bickel
Sanford & Susan Birnholtz
Diane Bishop
Joan Black
Charles W. & Sandra S. Blackwell
Frances P. Blatnik
Cynthia Bliskey
Joan & George Bliss
Blue Cross Blue Shield of Michigan
George L. & Joyce Blum
Daniel E. & Patricia Bober
James H. & Judith I. Boeder
David C. & Josie Boike
Josie & David C. Boike
Mary L. Bold
Jordan & Rebecca Bolton
JoAnne S. Bonds
Douglas A. Bopp
Cynthia J. Borby
Samuel & Jean Bornstein
Joseph V. & Elaine C. Borruso
Leroy & Grace D. Bostic

Michael J. & Pam Bouchard
Rita M. Boucher
Denise M. Boumaroun
James & Karen Boydston
Francis J. & Anne K. Boyle
Hope Bradford
James H. Bradley
Cathy S. Brady
Kecia Brady
Mary Brady
Beth Brandvain
Jack Bratun
James H. & Maurine D. Brennan
Richard J. & Nancy J. Brennan
Karen Brenner
Jules Breslow
David A. Breuch
Anna Brickman
Robert Bridson
Deborah L. Briffa
Thomas Briggs
Jeffrey A. & Patricia L. Britt
Cynthia A. & Jeff Britton
Richard Britton
Steven M. & Debra A. Brock
Rodney & Elanna Broder
Jessica Brodsky
Jamie A. Brooks
JoAnn C. Brooks
Ami-Lee Brown
Benjamin & Melanie Brown
Brown County United Way
Gail L. Brown
Gina Brown
Judith K. & Maurice F. Brown
Kelly L. Brown
Larry Brown
Laurie & Eric Brown
Sue Ann Brown
Tonya M. Brown
Joseph & Sherry L. Browning
Susan Brozes
Lynne Bryant
Martha Buchanan
Fred T. Bugaj
Sha W. Buikema

Patricia A. & Robert Bulinda
Renae C. Burak-Thibeault
Kathryn S. Burch
Laura Burke
Patricia H. Burnett
V. K. Burns Goldberg
John W. & Mary Lou Burns
Mark J. Burns
Schuyler Burson
Evelyn Burton
Phyllis S. Burton
Nancy Buschmohle
James W. & Michelle R. Bush
Linda T. Butler
Denise Button
Butzel Long
Buy The Change
CA, Inc.
Jose Cabello
Frank & Rosemary Caccamo
Susan Cahill Williams
Shannon L. Cain
Catherine A. Calvano
Carl & Julia L. Camden
Sarah L. Cameron
Jack L. & Nancy Camilleri
Carolyn S. & Ray C. Campbell
Frederick J. & Kathryn Campbell
Nancy L. Campbell
Nina M. Campbell
James A. & Carolyn M. Cannon
Mark A. & Joy Cantor
Deena Canvasser
Eric S. & Debbie Canvasser
Carhartt
Elizabeth Caringi
Thomas A. & Teresa Carlson
Georgia Carpenter
Teresa & Paul Carroll
Robert Carson
Carla E. & Michael A. Case
Amy B. Cashen
James P. & Jennifer M. Cashen
Vitina A. Castiglione
Tina & Jack Caudill
Gerald P. Cavellier

We Gratefully Acknowledge Our Annual Fund Supporters: 10/1/2013 - 9/30/2014

Under \$250 (Continuation)

Barbara L. & Douglas R. Cecil	Community Presbyterian Church	Patricia Davidson
Margaret Cendrowski	Community Programs, Inc.	Brandi N. Davie
Cengage Learning Center	Lyn Connelly	Jon & Annette Davies
Marva Cernuto	Sandra W. & James D. Connor	Nancy G. Davies
Suzanne Chandler	Ellen D. Cook	James A. & Jane E. Davlin
Barbara Chapman	Peggy S. Cooke	Jess Dawson
Marcena R. Chapman	Diana & David A. Copp	Peter J. & Christine De Steiger
Nancy A. Chapman	Paul & Virginia Coppin	Michael E. Debs
Ronald B. Charfoos	Gail Corcoran	Rachel Decker
David & Maureen Charlip	Cynthia R. Corey	Roy I. & Kay Dekeyzer
Chase Bank	Mark & Cindy Corey	Jean H. Dembeck
Susan Chasson	Sean Corriveau	Terry L. Demers
Jim Chatas	Josette V. & David Cosman	Anna K. Demos
Joseph L. & Marge Chedraue	Craig J. & Carole Y. Cotter	Leda DeWolf
Jacquelyn R. Cheek	Sarah Cox	Geraldine A. DiCicco
Clarence E. Cheff	Sharon L. Cox	Kimberly & Charles Dickens
Keith & Denise M. Cheresko	Craig & Mary Anne Crafton	Arvene Dickstein
Janice Cherkasky	Allen & Aletha Craig	Michael Diegel
Dorothy D. Chessman	Douglas Craig	Gadis J. & Susan C. Dillon
Jody Chessman	Cheryl Crandell	Kathleen M. Dilworth
Carole L. Chiamp	Thomas W. & Maria Cranmer	Diane L. Dingwall
Tracee M. Childs	Kenneth & Nancy Crawford	Lisa Dion
Gary & Wendy Chodoroff	Margaret & Albert R. Crawford	Sharon Dischinger
William Chomic	James C. & Catherine A. Creighton	Eugene G. Dixon
Lorraine A. Chorkey	Derek Crowe	Lauretta Dixon
H. N. & Melvin B. Chudnof	Paul D. & Leslee M. Crowley	Amelia Dobmeyer
Ralph A. & Marilyn Chytry	Denise Cruz	Joshua & Catherine T. Dobrowitsky
Elaine M. & Joseph J. Ciaramitaro	Patricia R. Csatari	Lauren Dolega
Yvonne Ciochon	Jeanine Cudahy	Florence A. Doll
City of Auburn Hills	Ann Marie Curley	Jennifer Dollar
City of Rochester Hills	John A. & Peggy L. Currie	James E. & Marguerite M. Donahue
Jon M. & Karen M. Clapp	Carol L. Curtis	Darlene B. Donaldson
Mollie Clarahan	Lois J. & Jim D. Cyrulewski	Mary D. Donohue
Toni Clark	Douglas Czinder	Bill Doral
Clarus Lighting and Controls LLC	Janet Dabish	Carol Doral
John Clement	DAC Lady Bowlers	Rachelle Dorsey
Daniel J. & Linda M. Clinton	Pamela Dahlgren	Manisha N. Dostert
Valderes M. & Ronald F. Clinton	Antoinette M. Dahmen	Cheryl Dowell
Julie Cody	Stephanie Daiek	Robert M. & Julia E. Downey
James M. Cohen	Laurie A. Daignault	Carol Sue Doyle
Melanie Colbert	Patricia M. Dalrick	K. Scott Doyle
Brenda J. Coleman	Michael & Oriana D. D'Amico	Elizabeth J. & Richard S. Draganski
Arnold & Dorothy Collens	Elaine Danas	Draugelis & Ashton, LLP
Mary E. Combias	Gerald & Marcia Danner	Donna Dresback
Commerce United Methodist Women	Judith L. Davidson	John P. Drew
	Karen D. Davidson	Edmund & Lori A. Drozdowski

Under \$250 (Continuation)

Dennis C. & Robin Drury
Deborah M. & Scott A. Dunbar
Marya Duncan
Paul Dunkerley
Megan A. Dunlap
James F. & Judith A. Dunn
Marc M. & Jan K. G. Dunn
Lois Dupnack
Amy W. & Arthur T. Durfee
Jen Durham
Donald J. Durocher
Nelson & Phyllis Dworack
Anne M. Dylewski
JoAnn Eaton
Deborah Eberhardt
Gloria M. & Trevor E. Edmunds
Thomas E. & Maureen V. Edson
Janet Edwards
Tim & Erin Edwards
Scott T. & Lisa A. Eicher
Marie J. Eickholdt
Sherry L. & Martin Eid
Kathy Eisengruber
Elder Automotive Group
Suzanne M. Elder
Jerry M. & Mary H. Ellis
Mary Elmer
Deborah Emerson
Christian & Tiffany Emert
Bradley Emery
Claire J. & Richard K. Emmons
Larry N. & Janet R. Engelhardt
Thomas A. & Barbara N. Ennis
Dale N. & Jacqueline Epker
Epsilon Beta Chapter of Theta Tau
Rebecca & Robert Erfurt
Bill & Wendy Erzen
Teresa C. Eshaki
David A. & Judith M. Etzkorn
June M. Everett
Rick & Polly Faber
Susan Fabian
Stephen & Judy Facione
Farmington Family Physicians, P.C.
Blanca Fauble

Kathy Fawcett
Ashley N. Fecteau
Leonard & Janice Fedon
Neal Feldman
Susan G. Feldman
Richard & Jan Feldmann
Wanda L. & William Ferguson
Dawn Ferran
Dennis & Margaret S. Feskorn
Cynthia L. & George Fetsco
Jeremy P. & Sandra J. Fick
Fidelity Charitable Gift Fund
Denise E. & Dennis H. Fiems
Marvin V. Figaro
Michelle S. Filary
Elke Fillafer
Claudia Filler
Kaitlin Fink
Margaret Finn
First Congregational
First Congregational Church of Royal Oak
Mark W. Fischer
Ashley Fisher
Bruce A. & Lisa M. Fitzgerald
Jo Anne Fitzgerald
Kathleen Fitzgerald
Harold M. & Linda J. Fitzpatrick
Thomas A. & Honor E. Flaim
Sally Fleming
Mark E. & Susan M. Florek
Dennis Florence
Ruthanne Flory
Kay B. Flournoy
Jamison E. Foreman
Kenneth A. & Lisa R. Fox
Cheryl D. Freeman
Carolyn N. Fregolle
Pam Friedman
Nick Friedrich
Althea B. Frink
From House to Home
Ronald Fromme
Monica Fujara
Steven J. & Joan A. Gabelmann
Jane E. Gabler
Charles M. Gabrys

Thomas M. Gaffey
Michelle & Allen Gaggini
Carol Gaggos
William & Carol Gaggos
Galax E. Solutions
Davida & Judith E. Gale
Jane Galens
Dana L. Gallant
David F. & Sharon A. Galli
Sherry Galligan
Aaron R. & Heidi Garcia
Maria Garcia
Michael & Cindy Gardner
Antoine M. & Carol J. Garibaldi
Joseph & Jennifer Gasko
Gasser Bush Associates
GE United Way Giving Campaign
Steven L. & Joan Gebbia
Allan & Harriet Gelfond
Marie Gemmel
Carolyn M. George
Patrick & Kelli A. George
Thomas D. George
Kevin & Kim Gerald
Philip E. & Patricia A. Gerwert
Leslie Geupel
GFVC Madison Heights
GHAFARI Associates, LLC
Kay W. & John Giaconetti
Nancy L. & Frank Giannotta
Sheri Giardini
John L. & Dona Gierak
Michelle Gilbert
Noelle Gill
Pamela Gill
Chris Gillen
Richard E. & Cynthia T. Gillies
Sally & Edgar Gillies
Marilyn L. Gilpin
Lisa L. Gioia
John L. Giudici
Pauline J. Givens
John Glaeser
Marina S. Glagolev
Jack & Muriel Glaser
Sean E. & Kathryn Gleason

We Gratefully Acknowledge Our Annual Fund Supporters: 10/1/2013 - 9/30/2014

Under \$250 (Continuation)

Martha J. & John A. Gleichman
Caroline Glidewell-Hoos
Global Electronics
GMKC
Julie Goddard
Patty Godin
Pamela S. & Robert Goedde
Shirley Gofrank
Alan D. & Shelley Goldberg
Larry & Lorraine Goldberg
Linda R. Goldberg
Janice & Robert Goldfarb
Robert B. Goldi
Judy Goldis
Juliana G. Goldwater
Louise M. Golles
Lynne M. Golodner
D'Arcy Gonzales
Raul Gonzalez
Gerilyn M. Gooch
Frank Gormley
Kathy Goss
John S. & Marcy Gottesman
Arthur & Sherry M. Goussy
Eric Graczyk
F.Allen & Ruth Graham
Elizabeth A. Grai
Elaine M. Granger
Nancy A. Green
James R. Greene
Nancy Greenstein
Brigid Greenway
Cheryl Gregory
Andrea Griffin
Griffin International LLC
Alysse M. Griffith
Stuart Grigg
Karen L. Grime
James & Jo Grindem
James & Nancy Grosfeld
John & Carol Gross
Paul & Nancy C. Gross
Sean Gross
Joel R. & Wendy S. Gruber
Karen V. Guenther

Tami A. Guerra
MaryLou Guisinger
Karen Gula
David B. & Jill D. Guz
Gary & Nancy Halls
Mildred T. & John T. Ham
Sharon M. Hamden
Elinor A. Hamm
Katrina D. Hancock
Thomas Hanley
Margaret M. Hanna
Saree & Steven B. Hantler
Kathleen M. & Larry Haras
Thomas & Patricia Hardy
Philip N. & Christine L. Hargrave
Michele Harmala
James Harnden
Myra & Ted Harper
Mary Christine & Bruce C. Harris
Michael A. & Elizabeth Harris
Douglas E. & Lee Ann Hart
Helen M. Hart
Ronald & Kathleen A. Hartfelder
Sylvia Hartsoe
Louise I. Hartung
Dale D. & Jacqueline M. Haskin
Jennifer L. Haskin
Winston F. & Dorothy A. Hasler
Ahmed & Kristi Hassouna
Fritz Hatt & Holly Hudson Hatt
Terry A. Hauer
Sara Haynes
Robert K. & Jane E. Hazen
Laurie A. Heaton
Angie & Ken Hedrick
Daniel Heger
Victoria Heger
Elizabeth Heiden
Jean & Jeffrey Heikkala
Richard J. & Sheila A. Henderson
Dillon & Sammit Hendrick
Judith M. Henn
Elizabeth Herman
Gregg E. Herman
Melvin & Sylvia Herner
Fredric Herschelmann

Mary A. Hewelt
Judy & Eric Hicks
Stephanie L. Hicks
Cynthia J. Higgins-Smith
Elaine Hilborn
Thomas & Barbara J. Hildebrand
Lauren A. Hill
Hiller's Market
Denise L. Hillier
Thressa A. Hillman-Wolfe
James Hipple
William B. Hirn
John Hoagland
Tara N. Hoeksema
William S. & Betty Hoffman
Ruth Holmes
Patricia C. Holt
Eric Hong
Maureen K. & David J. Honiss
Anissa Hooker
Charles E. & Myra Hoover
Susan & Michael Hoover
Robin L. Horasarian
Paul & Eileen M. Horbal
Angela S. Horgan
Annette Horn
Paul R. & Barbara J. Hornkohl
Norman A. & Robert Horowitz
Masline S. Horton
Colleen Hosler
Kathryn M. & Anthony T. Hossain
Julie & George L. Houhanis
Cynthia A. Howell
Jeanne E. Hribal
Thomas & Mary Hrynik
HS Foundation
Bonnie D. Huber
Paul P. & Nancy L. Huber
Alan Huddy
Theresa A. Hudson
Michael Hudzik
Jennifer P. Hueni
John F. & Suzanne H. Hughes
Eugene & Crystal Hughey
Delores P. Humphrey
Tricia & Tom Huneke

Under \$250 (Continuation)

Janet T. Huntley
Mary Jo & Michael Hurst
Carol Husaynu
Rocky H. & Janet E. Husaynu
Edward J. Hustoles
Norman Hyman
Karen A. Hyre
Danielle Iafraite
iDashboards
Christina E. Ilitch
Immanuel Congregational Church
Nina Ingraham
Irish Rose Flower Shop
Robert Irwin
Gloria Jackson
Margit Jackson
Theresa Jackson
Gilda Z. & John Jacobs
Bruce C. & Marilyn E. Jacobsen
Kimberly Jakubowski
Sharond Jakubus
Ruth Ann Jamieson
Constance Jaroh
JC Penney Corporation Silicon Valley Community
Foundation
Steve Jelinek
Jerry C. & Amy T. Jenkins
John A. & Patricia Jennings
William T. Jetchick
Levi Johnson
Sandy Johnson
Yolandus Johnson
Brenthy Johnston
Carol C. & Ronald H. Johnston
Lisa A. Johnston
Susan K. Johnston
Joellyn M. Jolly
Denise A. Jones
Jacquelyn R. & Jeffrey R. Jones
Joyce L. Jones
Kristina M. Jones
Lisa L. & Joe L. Jones
Robert R. & Carole Lynn Jones
Scott & Beth Ann Jorgensen
Ann Joyce

Justgive
John H. Kaiser
Tim Kalafut
Roger A. & Monica Kalski
Geraldine Kalt
Patrick Kanary
Russ & Nikki Kane
Allison & Steven B. Kaplan
Meghan Kaplan
Rosan & Phillip Kaplan
Amy Kaplansky
Timothy Karna
David Kasab
Dennis & Carol Kasle
Florence M. & Raymond Kassab
George H. Kates
Sharon H. Katz
Susann Kauffmann
Kautex Inc
Levon Kayser-Shook
Terris & Lucille L. Kazakos
Keef Building Management
Michael T. & Margaret L. Keefe
Raymond C. Keeling
Sandra L. & George H. Keil
Dawn Keiser
Doreen Keller
Norb L. & Carole Keller
Keller Williams Realty - Lakeside Market Center
David E. Kelley
Lillian M. & Ray Kelley
Nancy H. Kelley
Michele Kelly
James & Susan S. Kelty
Kimberly A. Kenfield
Leanne Kennedy
Sharon A. Kennedy
Brian & Charlene F. Kerman
Brenda D. Kessler
Francis & H. King
Gloria D. & Levon King
Lillian D. King
Gary R. & Margie L. Kirsh
Erin M. Kish
Diane Klein
Rolf E. & Enid Kleiner

John S. & Terry Klenczar
Dorothy Kline
June A. Klinert
Norma E. Klisz
Isabelle Klose
Robert J. Knight
Donald & Eileen Knipp
Knoppow Family Trust
Nathan E. Koch
Dolores E. & Milton J. Kodidek
Kenneth & Marilyn N. Kohn
Julia Kohring
Christina Koleczko
Dale R. Koller
Steven E. & Kathleen H. Kopitz
Bill & Debbie Korte
Vaughn & Stella M. Koshkarian
Debra A. & Mark Kosowski
Harold J. & Susan H. Koss
Kiersten L. Kostrzewa
Lawrence R. Kovacs
Maureen B. & Robert Kowalski
Elizabeth M. & Paul Kowik
Robert & Marilyn Krause
Kathy & Bruce Krauskopf
Jeff Kreger
Donald Krencicki
Rick & Marilyn Kress
Tanya L. Krezenski
Jeff Krieg
Aaron & Winifred Krieger
Karen & Joseph Krigbaum
William M. & Jean E. Kroger
Matthew & Molly F. Krollicki
Roderick H. & Sandra L. Krupka
Jean L. Kubaiko
Harry & Belinda Kubbe
Richard D. & Kristine A. Kuhn
Laurie Kuper
Maria Kuziemko
Rita J. & Myron LaBan
Dale D. & Gina LaCroix
Rose Lahiff
Elaine Laker
Holly Lako
William & Elizabeth Lakritz

We Gratefully Acknowledge Our Annual Fund Supporters: 10/1/2013 - 9/30/2014

Under \$250 (Continuation)

Stephen F. & Carol C. Lalka
Lynette Landrum-Holliday
James Lane
James E. & Louise M. Lansing
Dante & Jane Lanzetta
Sissi Lapides
Kathryn Larsen-Thompson
Roxanne Larson
Sharon L. Larson
Sue LaRue
Sandra A. Lasecki
Steven H. & Bernadine P. Lasher
Deana Lassner
Donna Latour Thompson
Gregory Laub
Paul A. & Kay E. Laurencelle
Theresa J. Laurencelle
Blakely J. Lauria
Wendy Lauzano-Hertz
Richard E. & C. D. Law
Mark Lawrin
Leslie M. Lazzarin
Derek & Teresa Lefevre
Ann M. & Scott B. Leonard
Christopher & Jeanne M. Leonard
Stefania N. & Gerald J. Leskie
Samantha Letvin
Clarissa C. & Richard Levandowski
H. Barry Levine
Patricia & Thomas Levine
Robert L. Levy
Nicole Lewis
Kathleen & John Liadis
Liberty Mutual
Jean C. & William G. Lichtenberg
David Lichtenstein
Paul L. & Lynn M. Lieberman
Carole H. Lieberman Rich
Mary Ann & Gerald Lievois
Rosanne H. Lightstone
Dorothy H. Lindquist
Rita-Ann & John R. Lindstrom
Daniel T. Lis
Carol L. Little
Ruth W. Littleton

Ling Liu
Laura Lockhart
Tom & Martha Loftus
Logan's Roadhouse
Edmund L. & Suzanne London
Douglas J. & Mary E. Long
Rob Long
Rachelle R. & Guillermo Lopez
Ralf Lorenzen
John Lovegren
Richard & Barbara Lowrie
Brian Lozen
Yvonne M. Lozen
Stephane E. & David J. Lubin
Janet L. & William P. Luke
Michelle L. Lukitch
Michele Lutz
Adrian G. & Elizabeth A. Lyman
Carol M. & Robert H. Lyons
Richard K. Lyons
Molly MacDonald
Bruce MacGregor
John & Mary Mach
Mary E. Macherzak
Mary L. Mackey
Nancy L. & Gordon E. MacKinnon
Michael A. & Lisa A. Macocha
Macomb County Domestic Violence Council
Carmen A. & Rinaldo A. Maffezzoli
Kevin Magee
Vivian G. Maharas
Karin Maier
Barbara & Thomas J. Malbouef
Elisa Malile
Christopher J. & Sue Malone
Jerald B. & Carole J. Maltzman
Thomas H. & Sharon A. Manceor
Mary Mangiaracina
Robert A. Mangus
Elizabeth Mansour
Joan S. Mansueti
Jerry & Karen M. Mantyk
Deborah Marine
Elizabeth A. Marino
Mark T. Jacobson Philanthropic Fund
Carolyn Marks

John C. & Sheila H. Marsh
Janice A. & William L. Martens
Charles & Catherine I. Martin
Debra K. Martin
Gail & Robert Martin
Joy Martin
Susan L. & Douglas E. Marvin
Steven W. & Mary Mason
Edward J. & Roberta Masters
Tamara Mastro
Rick C. & Kim P. Mathias
Larry & Maureen Matta
Joan I. Mattison
Somer M. Matty
Patrice Matujec
Wanda & Nicholas V. Maturo-Mumford
Maxine and Stuart Frankel Foundation
Catherine Maxwell
Glenn D. & Kathe Maxwell
Beth May
Richard H. & Mary E. May
Andrew Mayer
Elizabeth Maysa
Evelyn Mazzola
Gary McAllister
Barbara E. McBeth
Barbara K. McCabe
Gwendolyn D. McCain
Mary G. McCarter
Matthew McCarty
Linda L. & Patrick B. McCauley
Richard R. McClary
Angela K. McConachie
Diane McCormick
Alice E. McCoy
Richard E. McDevitt
Hugh C. & Janice E. McDiarmid
Valerie L. & Eric McDonald
Katelyn McDowell
Robert J. McEachern
Scott McGregor
Brian E. & Janet McIntee
Sean McIntosh
Kasey L. McKanna
Jane C. McKee
Mollie B. McKenzie

Under \$250 (Continuation)

Megan P. & Daniel S. McKnight
Shari D. McLarty
John McMahan
Cathy McNamara
Nancy L. Meconi
Media Period
Susan Medina
Lynn Medow
David J. & Donna Medved
Amanda R. Mehalko
David & Priscilla Mengyan
Lucy Merritt
Metro Controls
Howard I. Meyer
Margaret A. Meyers
Mark J. Meyers
Raymond Michaels
Colleen & Richard R. Michels
Rachel Michelsen
Christine Mickelson
Debra A. Mifsud
Frank H. Millard
Irving & Marcia Miller
Louis R. & Karen Miller
Stacey A. Miller
Danna Milligan
David Milligan
Christa E. Minnick
Steven Miscavish
Michelle A. Mistretta
Yvonne & Fred Misuraca
Sheryl L. Mitchell
Sue Mitchell
Susan C. Mitchell
David C. & Susan Monaghan
Larry Montie
J. Glen & Sheryl K. Moore
Jill Moore
Matthew M. Moran
Robert E. & Leslie Morgan
Lorna Morgan-Hendricks
Tracy Morisi
Cindy Morley
Carol J. Morris
Stevie A. & Rodney Morris

Margaret F. & James M. Morrison
Jeremy S. Motz
Karen Mountz
Maggie L. Mountz
Jack & Valerie L. Mowry
Thomas M. & Marceline D. Mudie
Neil E. Mueller
Vincenza Mueller
Judy A. & Dennis Muhn
Charles K. & Judith M. Mullins
Karen S. Mullins
John R. & Lois L. Mumford
Sheila Murphy
Marguerite Murray
Kathryn A. Murrenus
John R. & Christine D. Musich
Monni & Joel Must
Dennis & Deborah Muzzin
Shaun Myer
Susan Myers
Rita Nader
Bhushan Nagarajan
Mary M. & Gary M. Najarian
Sally & Edsel R. Najor
Veronica Nastasy
Bennett & Sondra Nathan
Craig T. Necci
Loretta Nedwick
Christie D. Nelson
Paul G. & Mary L. Nelson
Kenneth Newman
Jerome C. Neyer
Curt & Holly Nielsen
Jean A. Niemann
Robert J. & Noreen E. Niemiec
William R. Nixon
Bonnie Normile
Mary K. & Richard I. Norton
Susan & Mike Novak
Morton L. Noveck
Joshua D. Nucian
Oakland Community College
Oakland County Treasurer's Office
Daniel P. & Ann Marie O'Brien
Dan O'Connor
TJ O'Connor

Laurence F. & Candice B. O'Dess
Linda M. & Clifford Oestman
Dorothy O'Hare
David & Renee Olejnik
Mark R. Oliver
Ron Olsey
Elaine M. & Jere A. Olson
Jadwiga H. Olszewski
Olympia Entertainment
Joanne E. Onderko
David J. & Sheryl B. Onofrio
Terry R. Oplinger
Joshua F. Opperer
Raymond Martin Orange
Jessica Orr
Antonio & Tisha Ortiz
Mary O'Shea
Mahir Osman
Margaret O'Sullivan
Michael D. Ouvry
Vita A. Pace
Robert & Eva K. Packard
Robert C. & Nancy J. Padilla
Marc & J.A. Pagani
Jinefer Pappas
Theodore G. Pappas
Kenneth M. & Gertrude M. Paraskevin
Margaret Parker
Ryan W. Parker
Elizabeth Parra
Gloria D. & George H. Parrish
Vicki A. Parry
Arlene Pascoe
Darren & Christine Passalacqua
Jasmin Patel
Roberta Patt
Leona R. Patterson
Joelyn Pawenski
Nancy A. & Michael J. Pawlukiewicz
Carey Payne
Susan S. Payne
Steven G. Pearce
Mary Pearsall
Theresa & John Pellerito
Eric J. & Connie K. Pelton
Ruth E. Peng

We Gratefully Acknowledge Our Annual Fund Supporters: 10/1/2013 - 9/30/2014

Under \$250 (Continuation)

Richard F. Pennock	Lawrence J. & Donna M. Quinlan	Marla Rodgers
Heather L. Peralta	Kristen Quinn	Lori A. Roeser
Perfect Smile Dental Associates, P.C.	Stacy Quinn	Robert R. & Tammy H. Roman
Ruth Perry	Donald L. & Rosemary A. Rabahy	Barbara M. Rosalik
Susan E. & Mark J. Person	Kathleen & Leon Raczkowski	Dave Rose
Gary C. Peters & Colleen Ochoa-Peters	James A. Radloff	Marc D. & Lynn Rosen
Kathryn J. Peters	Mike Radonovich	Robert L. & Joan G. Rosen
Margarita L. Peterson	Lori Rafferty	Roberta & Melvin Rosenberg
Patricia G. Peterson	Dawn & Mark Ramsay	Joan Rosenbloom
Alice R. Pfahlert	George C. & Barbara H. Randall	Arlene L. & Ronald R. Ross
Phi Kappa Alpha Delta	Lynn Range	Laura & Randy Roulier
Patricia Philippart	Gloria Rankin	Kathleen M. Roy
Christine Phillips	Karen K. & Richard Rappleye	Barbara Rubin
Don L. & Christine A. Phillips	Samuel N. Ray	Gary & Gail Ruby
Lynn Phillips	Larry T. & Hope Raymond	Ruby Tuesday
Ariel Philyaw	RBS Citizens Foundation	Edward O. & Mary J. Ruffley
Gillian B. Pines	Joan Redisch	Cari L. Rummel
Sandra F. Plezia	Janice L. Reed	Sandra K. Rusche
Plymouth Technology, Inc.	Laurie J. Reichert	John C. & Barbara A. Ryan
Elaine M. Podgorski	Kimberly A. Reid	Michael Rybka
Amy Polega	Jennifer A. Reimer	Lori L. Sakorafis
Deborah L. Polley	Chris Reineke	Layne Sakwa
Marc D. & Marilyn Pomerleau	Paul Remesz	Cyndi Salinis
Ed Pomfret	Pamela Renga	Daryle & Cheryl Salisbury
Sharon Pontius	Denise Reske	Tina M. Salvatore
Carole J. Porretta	Margaret Reyes	Ronald M. & Mary Lou Sam
Mary Porretta	Nadji & Oakley Reynolds	Ingrid Y. Sandeck
Bob Porter	Gary & Judy K. Rhoads	Laura Sanders
Lynn A. Portnoy	Kathleen Rice	Kathleen M. Sandoe
Eleanor K. & Thomas J. Poster	Mary Kay & A.W. Rich	Thomas E. & Carolyn Sandon
Clifton & Victoria Powell	Lois M. Richard	Janice Sanecki
Presbyterian Women in the Congregation	William Richards	Seetharaman Santhanam
Geraldine C. & John Pridmore	Pamela K. & Carl Riden	Helen R. Santiz
Carol A. & Thomas Priestley	Eric & Deborah Ridenour	Herbert M. & Audrey Saperstein
Professional Rehabilitation Services of Michigan, Inc.	Kimberly Riemer	Ebany Sapp
Marianne Provenzano	Susan Riemer	Carla J. & Paolo Sarti
Patricia A. Przywara	Steven H. Riga	Kenneth & Patricia Sasse
Melissa J. Pugh	Linda A. Riggs	Janis E. Sattler-Fried
Kim U. Purcell	Susan J. Ritchey	Marjorie S. Saulson
Tommy Pustuika	Barbara S. Ritchie	Nancy C. Savage
Carol Pyke	William A. & Catherine Roach	Laura A. Sawyer
Shannon Quay	Keith Roath	Tony Scaccia
Imran & Zohra Quereshi	Scott Roberts	Anthony Scalzi
Laura Quigley	Peggy Robertson	Jamie L. Schaller
Beverly A. Quince	Shirley A. Robertson	Suzanne Schatz
	Gladys Rockind	Marcia & Fred Schelter

Under \$250 (Continuation)

Riva Scherr
Christine Schichtle
Geraldine Schinzel
Sunni Schirmer
Mary L. Schmitt
Melvin & Shiela Schmittel
Brian & Angie Schmucker
Curtis J. Schoenjahn
Thomas P. & Marcia Scholler
Karin D. Schramm
Kenneth Schramm
William J. & Judith A. Schramm
Patrick Schullo
James P. & Patricia H. Schultz
Dick Schumacher
John D. & Mayna M. Schumacher
Jeff Schuman
David L. & E. D. Schuvie
Nancy B. Schwall
Matt & Monica Schwantz
Carol Schwartz
Robert & Catherine Schwartz
Mary P. & Steven H. Sclawy
Marjorie Scott
Gordon & Marilyn Scupholm
Robert Sedler
Isabelle Seipke
Nicole Sementkowski
Mark A. & Lauren E. Seng
Senior Counseling Services LLC
Sandra L. Seroka
Christopher & Debra Shagnea
Rosemary Sharland
Joan F. Shaughnessy
Barb Shaya
Marc & Marla Shefman
Leslie C. Sheidler
Ronald G. Shell
Ashara C. Shepard
Lillian & Jacob J. Sherbin
Margaret Shimkus
Mary Shindel
Terri A. Shoop
Lara Shovlin
Laura A. Showalter

Barbara B. Shrem
Deborah Shuttie
David G. & Ann Sibley
William E. & Michelle Y. Sider
David Sidlar
Martha Siefman
Judith Siegel
Daniel Siegle
Linda S. Siens
Rita Sierra
Sigma Pi
Anthony Sikora
Janice Sikorski
Susan Silagi
Jan Silverman
Larry A. & Jennifer L. Simon
Kristin Simoneaux
Ted & Andrea Simons
Kaitlyn Simonsen
Carolyn A. Simpson
Robert E. Simpson
Lois P. Singleton
Lois Sinnaeve
Robert & Gail Sirna
Marjorie Sivak
Shanthi L. Sivanandham
Michelle S. & Christopher S. Slaviero
Cathy Slavik
David Slevin
Pamela S. Sloan
Lindsay E. Slotka
Marie A. Slotnick
Charles & Sharon Slusser
Teresa Slyfield
Raymond & Dyann C. Slywka
Sylvia Smaltz
Erinn Smiley-Studier
Caren B. Smith
Elaine G. Smith
Elizabeth A. Smith
Gale L. Smith
Jeffrey R. & Sharon A. Smith
Joan M. Smith
Kathryn & Steven H. Smith
Nancy Smith
Perry Smith

Ronald M. & Laura L. Smith
Vivian M. & R. N. Smith
Eleanor T. Socha
Jan Sockness
Kimberly R. Sokol
Patricia G. Solomon
Helene D. Somers
Jacquelin Sorkin
Southside Seventh-Day Adventist Church
Stephen J. Sovey
Al Sowers
Alice & Dennis Spande
Julie Spear
Susan Spears
Stephen E. & Terryl Ann Spence
Audrey M. Spencer
Gary & Geraldine Spezia
Jennifer Spicher
Howard Splete
Richard F. & Linda G. Spranger
Troy Springer
Kristen M. Stachura
David B. & Julie A. Stahl
Gary R. & Diane M. Stahle
John C. & Linda Stamey
Sandra Stanbury
Robert A. & Patricia M. Starr
Susan J. & Jonathan P. Staryk
Robert V. & M. R. Stavenik
Patricia & Thomas J. Steckel
Jacquelyne M. Stein
Leslie Stein
Saul & Ruthie A. Stein
Larry Steinberg
Stephen J. Stempien
Judy & Howard Stephens
Lauretta A. Stephens
Karen L. Sterzik
Frederick W. Steuwe
Chantell Steveling
Shaun Stevens
D. Scott Stewart
Mark J. Stewart
Ogie Stewart
Esther Stillman
Jeanne M. Stine

We Gratefully Acknowledge Our Annual Fund Supporters: 10/1/2013 - 9/30/2014

Under \$250 (Continuation)

Wendy & Bruce Stoller
Annette & Allen J. Stone
Elizabeth Stone
Mary Stoolmiller
Brian W. & Katherine A. Stouffer
Robert B. & Carol L. Stover
Marion A. Stowell
J. F. Straky
Alan W. & Debra Strickstein
Andrea M. Stromar
Richard & Angela Strong
Robert & Mary Strong
Christine & William Stuart
Michelle & Peter Stuhlfreyer
Joyce & Claude Sugg
Judith Ann Sullivan
Tony Sulvati
Jennifer Summerhill
Sumthing Green Metal Recycling
Audrey & Mark Sutton
Leslie Swanson
Tamra Swanson
Patrick & Geri Swartz
Patricia Swauger
Thomas F. Sweeney
Mary Ann Syers
Patricia Szura
Susan M. Szymanski
Janusz M. & Linda R. Szyzsko
Sandra Tait
Martha G. Tatham
Steffan Taub & Shelley Goodman Taub
Colleen M. Tavor
Diane M. Taylor
Jay R. & Kay Taylor
Ben Telian
Temple Shir Shalom
Raymond J. & M. D. Tessier
James C. & Barbara E. Tessmer
Chris A. Teufner
The Bronx Deli
Ann E. & Robert J. Thomas
Marjorie J. Thomas
Carole Thompson
Malcolm Thompson

Michele A. & Gary L. Thompson
Tracy Thompson
Nicole Thompson-Andrews
Thomson Reuters
Patricia Thull
Bernice Tierney
Yvonne Tipton
Keith M. & Jodi L. Tobin
Danielle Todd
Janice Tomakowsky
Cynthia A. Tomlinson
Christine J. Topley
Joe Toth
Dina M. Trapiss
Alison Trentacost
William & Beverly A. Triplett
Frederic S. & Mary T. Troff
Rebecca Tron
Ellen K. Troszak
Michael M. & Roberta S. Trzos
W.A. & Linda L. Tuomaala
Marion & David Turowski
Patricia Tyro
Bill Underwood
United Airlines
United Way of Delaware
United Way Of Greater Kansas City
University of Michigan- Dearborn
Thomas G. Upchurch
Gloria E. & Harold C. Usher
Debra E. & Kent D. Uygur
Theresa M. Uzenski
Oreste A. & Phyllis Vaccari
Patrick Valade
Brett & Joy Valentine
Linda F. Valice
Jane M. & Harold Van Dragt
Jennifer E. Van Proeyen
Jeanne VanderHeide
Ann L. Vanderlaan
Ruth B. Vandoorne
Glenn & Annie Van Gelderen
Victoria M. & Glendon M. Van Gorder
Nicole Vanstone
Lisa Varnier
Rosalyn Vega

Chris Venet
John A. & Janet M. Vermeulen
James J. & Cynthia M. Verner
Peter & Sue P. Vernia
VFW Ladies Aux. #6756
Robert H. & Emma L. Vidlund
Leslie A. & Christine B. Viegas
Tanya Vines
Caren N. Vinsky
Ewa Virga
Anthony A. Vitale
Rebecca Vlastic
Stephen M. & Patricia J. Voiles
Ginger B. Vollmer
Martha M. Von Behren
Suzanne & Carl Von Ende
Mary F. Von Koss
Judith L. & Brion H. Waara
Barbara Wachler
Katherine E. Wade
Jack A. & Diana L. Wagner
Ronald L. & E. Joane Wagoner
Susan C. & Tom Wainwright
Jeff Walenciak
Cheryl Walker
David & Pauline L. Walker
Margaret A. Walker
Judith Wallace
Steven Wallace
Michelle L. Walney
Ida & Harry Walters
Lisa & Daniel Walters
Frances A. Wamby
Thomas J. & Kerry G. Waraksa
Richard C. Ward
Dorothy E. & Robert C. Warren
Gordon & Gail Warren
Robert P. & Deborah M. Washer
Philip D. Washington
Secret S. Washington
Deb Watkins
Sheen Watkins
Laura L. Watts
Barbara J. Weathers
Wayne D. Weaver
Dennis Weber

Under \$250 (Continuation)

Tim & Susan Weed
David E. Weeks
Randy E. Weiland
Gerald & Audrey Weinberg
Lawrence & Idell Weisberg
William C. & Margaret Weishaar
Harold & Myra Weiss
Christine M. & Eugene V. Welch
Patricia M. & Jacalyn F. Wenner
Jesse Wetzel
Richard Whiting
Carrie Whittaker
Megan & Benjamin Widman
Justin Wieber
Cary N. & Patricia A. Wieting
Renee A. Wightman
Antoinette Wilk
Diane Willard
Joanne G. & Donald Willen
Brigette Williams
Gary & Joann E. Williams
Gene Williams
Mary Williams

Williams, Williams, Rattner & Plunkett, P.C.
Cynthia N. Williamson
Sondra B. & Edwin L. Willobee
Thomas A. & Alicia A. Wilson
Lois A. & Alan R. Winer
Wines for Humanity
Forrest H. & Shirley G. Wing
Mark & Deborah Winkel
Sally Winkelman
Arnold & Susan Winshall
Barbara A. Winters
Brian Wisniewski
Christine A. Wissbrun
Jaimee L. Witten
Christine Wlodarczyk
Craig & Chantal Wolanin
Michael A. Wolfe
Emil & Rose Wolok
Woman's National Farm and Garden Association
Donald & Josetta Wood
Michael & Rachelle Wood
Marie C. Woodcox
Sharon Woods
Debra Woolley

Jennifer M. Wright
Richard H. & Faye Wright
JC Wylie
Elinor A. Wynn
Alice K. & James D. Xenakis
Edward V. & Randi L. Yates
Beverly A. Yocum
Casimir Zalewski
Suzanne D. & Michael J. Zanoli
Carrie & Jeremy Zarotney
Kathryn Zbanek
Mary Ann Zdan
Dawn Zelenka-Joshowitz
Colleen Zematis
Kathleen Ziegler
Lesley A. Zielinski
Paula Zimmer
Zonta Club of Milford
Marcie Zoref
Melvin R. & Barbara Zoschnick
Lois K. & Matt Zussman
Jason Zylka

Based on cumulative giving from October 1, 2013 through September 30, 2014.

*HAVEN also gratefully recognizes the support of our **742 in-kind donors, whose donations of items and services totaled more than \$428,250.***

Philanthropic support is very important to us and we make every effort to ensure there are no omissions or misspellings. Please forgive any oversights and contact us so that we may amend unintentional errors. Contact Carrie Copeland at 248-322-3706 or ccopeland@haven-oakland.org.

We Gratefully Acknowledge Our Plant the Seeds of Hope Contributors 10/1/2013 - 9/30/2014

\$50,000 +

Clare Dusevoir Trust
DMC Foundation
Debra A. Glendening
Hearst Foundation
Young Foundation

\$10,000 - \$49,999

Suzanne I. Baber
Bank of America
Christine A. & Dana M. Beck
Rose M. Berberian
Lisa Brown
Kenneth & Karen Dallafor
DeRoy Testamentary Foundation
Ford Motor Company Fund
Giarmarco, Mullins & Horton, P.C.
Lear Corporation
Northern Trust Bank
Carla J. & Paolo Sarti
Debra I. Thorpe
Walnut Creek Country Club
Dave M. & Lori Wathen
Kathleen M. & Bill White

\$5,000 - \$9,999

Kelly F. Benson
Meg & Thomas Gordy
Edward & Sharon Karas
William I. Keller
Mary Ann & Gerald Lievois
David & Marilyn Lochner
Marja & Gerald Norris
Susan B. & Lawrence E. Perlin
Sandra E. & Thomas J. Pierce
Barbara A. Quilty
RBS Citizens Foundation
Paul W. Smith

\$2,500 - \$4,999

Clannad Foundation
Terry Merritt
Beth Morrison
Martha R. & Mark Moyer
The Skillman Foundation
Leroy H. & Marcia A. Wulfmeier
Carrie & Jeremy Zarotney

\$1,000 - \$2,499

David J. & Lisa L. Bartlett
Brent & Karen Davidson
Emily Eisele
Kathy & Jeff Elston
Monica Emerson
Michelle Gilbert
John S. & Marcy Gottesman
Haworth Inc.
IWIRC Michigan Network
Allison & Steven B. Kaplan
Monique R. LeGris
Diana Lewis
Laura A. Marcero
Andrea T. Martin
Terri Moon
Oakland County Prosecutor's
Office
Sheri & Todd Pawlik
Camilla & Sergio Robarts
Carole & Gregg Winnard Brumm
Helaine Zack

\$500 - \$999

AXA Foundation
Marcia D. & Timothy E. Cairns
Jessica R. Cooper
Carol L. Curtis
David Drouillard

Finit Solutions
Angie Kelly
Alicia Masse
Morgan Stanley

\$250 - \$499

Peggy Cummins
Marc Edelstein
Pamela & Vernon M. English
James J. Williams & Associates, PLC
Julie E. & Randall C. Jones
Samuel Jones
David & Amy Lieberman
Ann Marie Uetz

Under \$250

Advanced Land Development
Co., LLC
Michael & Heidi Ajlouny
Anonymous
Liz Bayer
Bill Brown Ford, Inc.
Kyle A. & Jillian M. Boring
Michael J. & Pam Bouchard
Sandra C. Brock
Daniel J. & Beverly A. Buckley
Barbara L. & Douglas R. Cecil
Joseph & Margaret A. Chemello
Barbara L. Clary
Joseph & Sandy Consiglio
Norman D'aun
Kimberly & Charles Dickens
Different by Design
James L. & Carolyn G. Embree
Laurie Eppler-Brian
Julie & Greg Erne
Steve & Regina Ferguson
Wendy & Jerry Foss

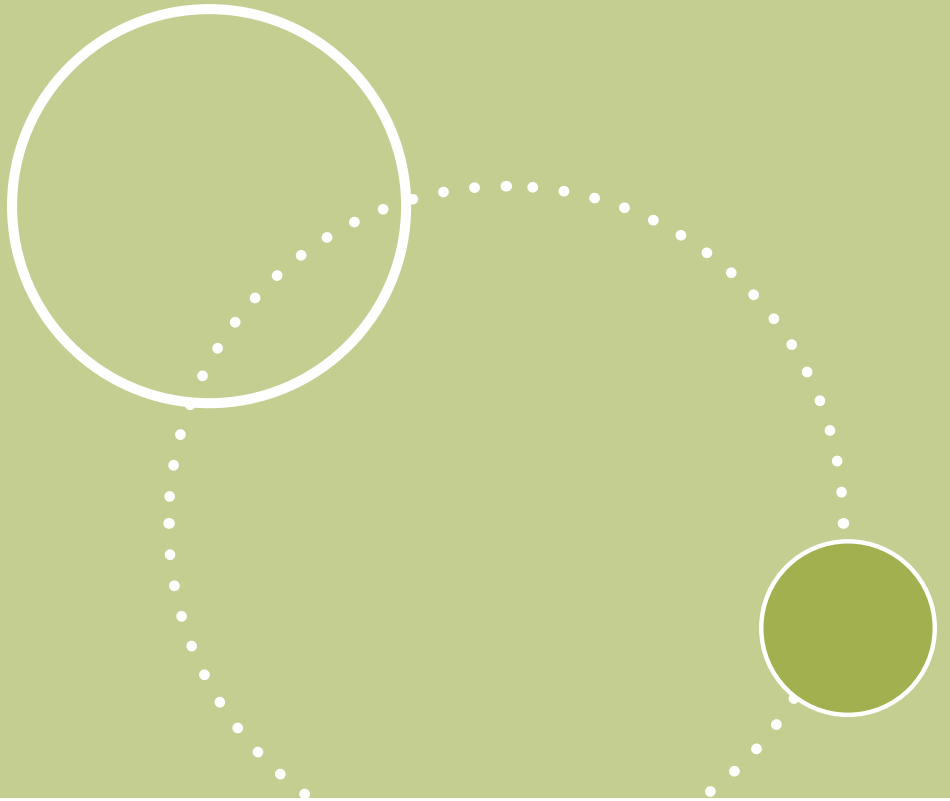
Under \$250 (Continuation)

Dana Frellick
Marcia Gershenson
Michael Gingell
Great Lakes Cremation, Inc.
Jennifer Hammond
Kathryn Hanna
Erin Harkness
Adreena M. Harley
Helm Realty Partners LLC
Christine & Michael Hilfinger
Janyne M. & Larry Hilfinger
Mark E. & Nichole Hilfinger
Robert J. Hoffman
JC Belle Group, LLC
Jude Jones
Jonathan D. Kidder
Kil's Tae Kwon Do
Matthew B. Kozinski
James & Lucy Kulpa
Lisa Leverenz
Lloyd's of Novi LTD
David J. & Mary K. Lychuk
Maclean Maynard
Jeffery S. Matis
James F. & Mary Jo McDonough
Andrew E. & Sara Meisner
Midwest Supply & Maintenance Co., Inc.
Jennifer Nienberg
Eric F. & Kristen E. Perkins
Gretchen Perkins
PM Environmental
John & Beverly B. Prior
Donna Reeves
Shirley A. Robertson
Patrice L. Rodkey
Phillip Rodriguez
Julie Ross

Santeiu Vaults, Inc.
Kristin Schleicher
David Schlitt
David & Cynthia Senatore
Steve Shanker
Sharona Shapiro
Robert S. & Brenda K. Sonneveldt
Spillane & Reynolds Orthodontics
Rebecca Stahr
Ronald A. & Gloria L. Tachuk
Jacqueline S. Thompson
Mary Timmons-Fairman
Tip Capital
Cathy Tosto
Michael M. & Roberta S. Trzos
Elizabeth Ventimiglia
Cheryl Vogelmeier
Robert P. & Deborah M. Washer
Clare Willett
Nancy & Wesley Vee
Lincy Zachariah

Based on cumulative giving from October 1, 2013 through September 30, 2014.

Philanthropic support is very important to us and we make every effort to ensure there are no omissions or misspellings. Please forgive any oversights and contact us so that we may amend unintentional errors. Contact Carrie Copeland at 248-322-3706 or ccopeland@haven-oakland.org.



Crisis and Support Line

Local: 248-334-1284
Toll free: 877-922-1274
TTY: 248-334-1290

HAVEN Business Office

30400 Telegraph Road, Suite 101
Bingham Farms, MI 48025
Business Office: 248-334-1284
Business Office Fax: 248-334-3161

www.haven-oakland.org
Facebook: havenonline
Twitter: @HAVEN_Oakland

HAVEN locations:

Bingham Farms
Pontiac (2)
Royal Oak