



2013 HAVEN Annual Report

Dear Supporter –

During 2012-13 HAVEN undertook the task of solidifying our agency values. The process by which we selected, defined and implemented these values was thoughtful and focused; ever mindful that our values should encompass our daily work both as an agency and as individuals. More than a mere piece of paper, they tell a story of how we treat those we serve, those we work with and those in the community.

As the chair of the Board of Directors and the agency's CEO, we want to share these values with you and demonstrate just a few of the many ways we have put them into action.

We are INCLUSIVE: We believe in equality. All people deserve dignity, respect and have value.

- HAVEN partnered with Deaf CAN! and Deaf Women's Advocacy Services to develop an online chat program that allows hearing impaired victims to chat live with a crisis counselor. This partnership also allowed us to develop additional resources specifically targeted at this population; including adding ASL videos to our website and developing self-assessment tools geared towards recognizing abuse for the deaf community.

We act with INTEGRITY: We inspire confidence in clients, colleagues and community partners by always acting with fairness, honesty, respect and trust.

- HAVEN has a long history of unqualified financial audits and financial transparency. That was evidenced in this year's Department of Community Health Victim of Crime Assistance audit, which noted that we are one of the state's top agencies in terms of our adherence to excellent policies and procedures.
- The McGregor Fund, one of metro Detroit's largest and most esteemed private foundations, continues to invest in our growth, and this year funded a capitalization study. Based on nine balance sheet areas of risk, the report indicated that we need to continue to grow our capital but, overall, are currently well positioned to absorb risk.

We deliver EXCELLENCE: We are driven by our mission, vision and guiding principles.

- We launched a redesigned website engineered by advertising and marketing communications agency, Lowe Campbell Ewald. The website features content about HAVEN programs, mission, leadership, donation options, survivor stories, volunteer opportunities and agency news. The simplified navigation and menus allow site visitors to easily locate assistance and information 24-hours per day. Please visit www.haven-oakland.com to see it for yourself.
- In response to Michigan's new felony strangulation law, HAVEN co-sponsored a training entitled Techniques for Documenting, Investigating and Prosecuting Strangulation. Conducted by the Prosecuting Attorney's Association of Michigan and held in conjunction with the Oakland County Coordinating Council Against Domestic Violence, the training was held in April 2013 and was attended by 75 professionals including law enforcement officers, prosecuting attorneys, judges, forensic examiners, victim advocates, medical personnel, and various other professionals.

We pursue BOLD ASPIRATIONS:

We strive to imagine, innovate and create solutions.

We honor the history of the Battered Women's Movement by demonstrating feminist principles.

- Through our Plant the Seeds of Hope campaign, we continue to work towards our vision of establishing the first Family Justice Center in Michigan. (see page 11)
- On Valentine's Day HAVEN joined in solidarity with thousands of people from around the world to rise up and move the earth through dance to counter violence against women. The single-day of global action was part of One Billion Rising, coordinated by V-Day, a global activist movement working to end violence against women and girls. The event was designed to invite the community to shake the world into a new consciousness, demonstrating that violence against women and girls is not only a woman's issue; it's a human issue.
- In April, the Oakland County Board of Commissioners presented HAVEN with the Crime Victims Services Distinction Award for Professional Innovation in Victim Services.

We cultivate the HUMAN SPIRIT: We behave in a balanced, thoughtful manner that considers every aspect and outcome of our business decisions and behaviors. We strive for a work environment that supports fun, humor and self-care.

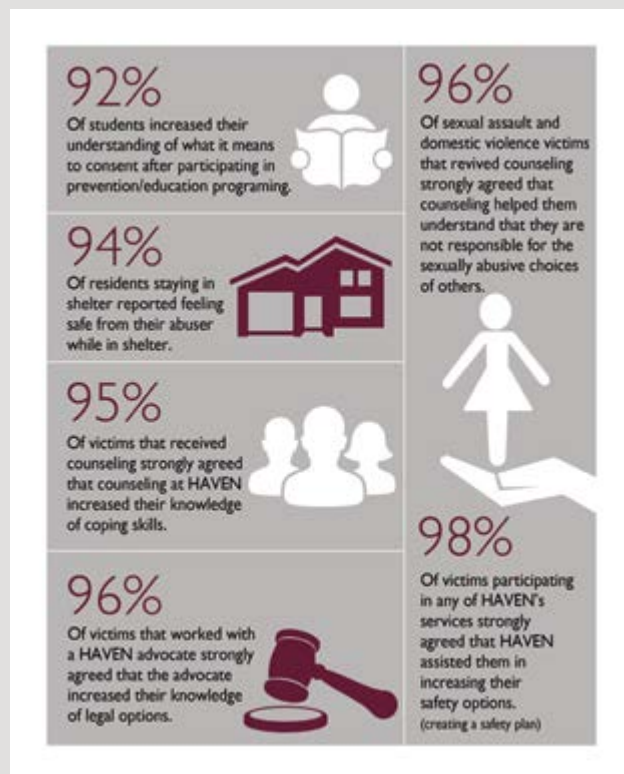
- Each year HAVEN relies on the dedication and compassion of over 1,000 volunteers. Whether as an individual or in a group, their tireless dedication allows us to broaden our reach by assisting staff with everything from taking calls on the crisis line - to painting bedrooms - to overseeing children's activities - to assisting clients with personal protection orders.
- This year HAVEN offered complementary therapies in addition to traditional talk therapy. These approaches included: art experientials, yoga, movement, photo voice and the practice of meditation, and emphasized the interrelationship between mind, body and spirit. Two of HAVEN's therapists presented at the Michigan Coalition to End Domestic and Sexual Violence (MCEDSV) annual conference in an effort to share these valuable techniques with other agencies assisting victims on their paths from crisis to healing.

TERRY MERRITT

Chairwoman



2012/2013 Outcomes



BETH MORRISON

President / CEO





About HAVEN

Vision

HAVEN, a nationally recognized nonprofit leader in Oakland County, promotes a world of safe, equal and accountable communities where sexual assault and domestic violence do not exist.

Mission

To eliminate sexual assault and domestic violence and to empower survivors through advocacy and social change in and around Oakland County.

Goals

- Provide comprehensive and culturally sensitive services to child and adult survivors and their families.
- Provide youth intervention services to support respectful, loving, and safe relationship behaviors.
- Provide prevention education and professional development services.
- Work collaboratively with the community to achieve our HAVEN vision.

Guiding Principles

- Intimate partner violence affects all of us.
- Women and girls are disproportionately victimized by their partners, dates, or other perpetrators. Anyone can become victimized by a partner, date or other perpetrator regardless of race, socio-economic status, gender, culture, education or religious beliefs.
- Education at every stage of life is essential to ending intimate partner violence. Everyone needs education on the root causes of abuse so gender inequality and oppression can be examined and confronted.
- All women, children and men have a right to their identities regardless of tradition, cultural norms or gender roles, some of which support and encourage perpetrators' abusive choices.
- Abuse is a deliberate act of power and control by the perpetrator, and the survivor does not provoke, enjoy nor deserve it.
- Survivor-centered services honor survivors as experts of their own experiences.
- All people have the right to live without fear.

HAVEN Programs

What we do and who we help



Prevention Education

Trained educators work with young people, and their teachers and parents, to equip them with the tools to make better choices, to build relationships based on mutual respect, and to understand what consent means. Educators also provide professional training to health care providers, law enforcement, clergy, and members of the general public on the dynamics of domestic violence, sexual assault and the root causes of these issues.

Crisis and Support Line

The Crisis and Support Line is open around the clock, 365 days per year. The support line provides crisis intervention, understanding and support, referrals and information to those affected by domestic violence and sexual assault.

Residential Program

Our Residential Program is Oakland County's only 24-hour emergency shelter exclusively for domestic violence and sexual assault victims and their children.

Social Action Program

Advocates provide support and education for victims moving through the legal system. First Responders provide immediate crisis intervention and emotional support for victims and their families at Oakland County hospitals and police stations after an assault has occurred.

START (Safe Therapeutic Assault Response Team)

Forensic Nurse Examiners and First Responders provide a comprehensive forensic medical exam and compassionate emotional support for victims of sexual assault.

Counseling Program

The non-residential Counseling Program serves children and adults that have been affected by domestic violence and sexual assault. Specialized groups and individual counseling are provided at no charge to survivors.

Volunteer and Intern Program

Volunteers actively assist HAVEN clients through direct and indirect support in all HAVEN programs, and in 2013 contributed 6,819 hours of service in HAVEN programs. Interns receive practical experience in domestic violence prevention, sexual assault treatment, prevention education, community outreach, administration, research, and program development.



HAVEN Success Stories

An Outlet to Heal and Grow

Through the Creative Healing Workshop series, survivors of domestic and sexual violence had unique opportunities to process and express their wide range of emotions associated with their trauma. Participants experienced a sense of empowerment and growth, and several sent notes of gratitude like the sentiments below.

Justice Served

Carmen* was a young woman who bravely confronted her ex-boyfriend in court after he was accused of stalking her. A HAVEN Court Advocate in our Social Action Program attended hearings with Carmen and her parents, providing all of them with reassurance and resources. After Carmen's ex-boyfriend pled guilty to felony aggravated stalking, her parents sent a note of appreciation to the HAVEN staffer, which read, "As parents, we never wanted our daughter to ever experience the pain she has had to go through. This terrible time in her life was made much easier as the direct result of your commitment and hard work. We will always remember your willingness to help us in our time of need."

A Team Effort

Kendra* was beginning the process of divorcing her abusive partner when she contacted HAVEN. After years of torment at the hands of her ex, Kendra was able to gain a sense of safety and empowerment as HAVEN court advocates helped her to obtain a personal protection order (PPO) and supported her through the legal process. Kendra also started to heal and process the abuse while working with a HAVEN counselor. She recently relayed her gratitude, stating, "Police, court employees, counselors in the field... They could all benefit from spending just one day watching what HAVEN does with so much integrity and respect of others' lives. You are ALL amazing."

**Names have been changed to protect the safety and confidentiality of these HAVEN clients.*

2012/2013 Fiscal Year Service Facts

These figures represent the people assisted in the last year by HAVEN Programs.

Residential Program

Adults.....	170
Children.....	202

Counseling Program

Adults.....	799
Children.....	168

Social Action.....3020

START Exams..... 148
(*Safe Therapeutic Assault Response Team*)

Prevention Education

Total Presentations.....	449
Students.....	8096
School Personnel.....	123
Individuals.....	3044
Law Enforcement.....	125
Clergy.....	250
Educational Personnel.....	55
Other Professionals.....	270

Systems Change Events.....52

Personal Protection Order (PPO)...436

Crisis and Support Line Calls.....4610



In fiscal year 2012-2013, HAVEN turned away women, men and children seeking shelter in our Residential Shelter Program 769 times, due to lack of space.



Financial Position

Statement of Financial Position
September 30, 2013

CURRENT ASSETS

Cash and cash equivalents.....	\$623,697
Investments.....	\$1,879,882
Inventories.....	\$25,564
Receivables:	
Grants receivable.....	\$257,997
Unconditional promises.....	\$40,711
Capital campaign contributions.....	\$493,267
Other receivables.....	\$10,629
Prepaid expenses.....	\$47,884
Beneficial interest.....	\$188,462
Land, building, and equipment at cost... (Less accumulated depreciation)	\$1,141,564
Total assets.....	\$4,709,657

CURRENT LIABILITIES

Accounts payable.....	\$41,553
Accrued compensation.....	\$114,981
Deferred revenue.....	\$950
Total liabilities.....	\$157,484

NET ASSETS

Unrestricted:	
Board designated.....	\$217,059
Undesignated.....	\$2,645,637
Total unrestricted.....	\$2,862,696
Temporarily restricted	
Capital campaign.....	\$1,488,844
Time restricted.....	\$40,711
Specific purpose.....	\$159,922
Total temporarily restricted.....	\$1,689,477
Total net assets.....	\$4,552,173
Total liabilities and net assets.....	\$4,709,657

Statement of Activities and Changes in Net Assets
for the Year Ended September 30, 2013

CHANGES IN UNRESTRICTED NET ASSETS:

Unrestricted Revenue	
Federal grant revenue.....	\$1,263,790
Other grant revenue.....	\$475,921
Fundraising activities.....	\$391,094
Contributions.....	\$492,562
In-kind contributions.....	\$297,367
Interest.....	\$25,632
Fees and other.....	\$19,154
Unrealized and realized gain on investments.....	\$112,056
Total unrestricted revenue.....	\$3,077,576
Net assets from restrictions.....	\$658,039
Total unrestricted revenue and other support.....	\$3,735,615

EXPENSES

Program services.....	2,732,057
Supporting services	
Administration and maintenance.....	\$169,755
Development.....	\$383,580
Capital Campaign.....	\$417,658
Total supporting services.....	\$970,993
Total expenses.....	\$3,703,050

NET INCREASE (DECREASE)

IN UNRESTRICTED NET ASSETS..... **\$32,565**

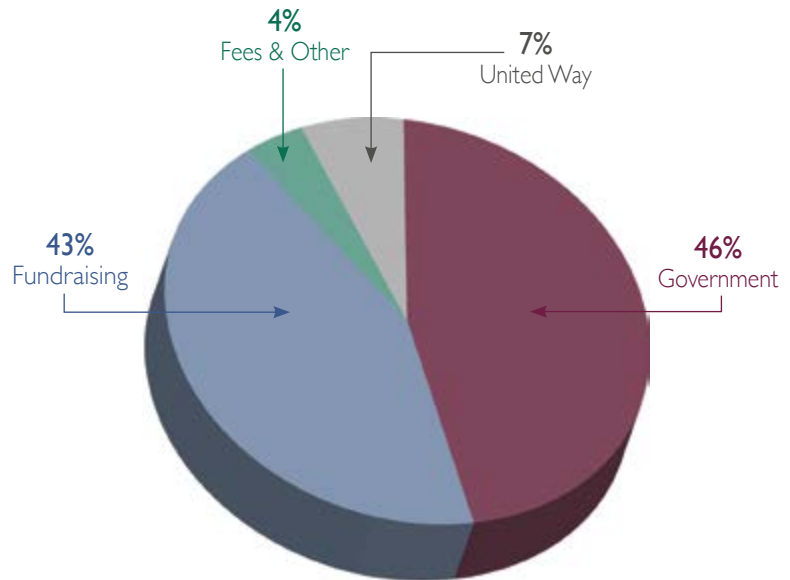
Change in temporarily restricted net assets

Contributions.....	\$225,211
Capital campaign contributions.....	\$805,673
Capital campaign related interest.....	\$134
Capital campaign in-kind contributions.....	\$58,330
Net assets released from restrictions.....	(\$658,039)
Net increase (decrease) in temporarily restricted net assets.....	\$431,309
Change in net assets.....	\$463,874

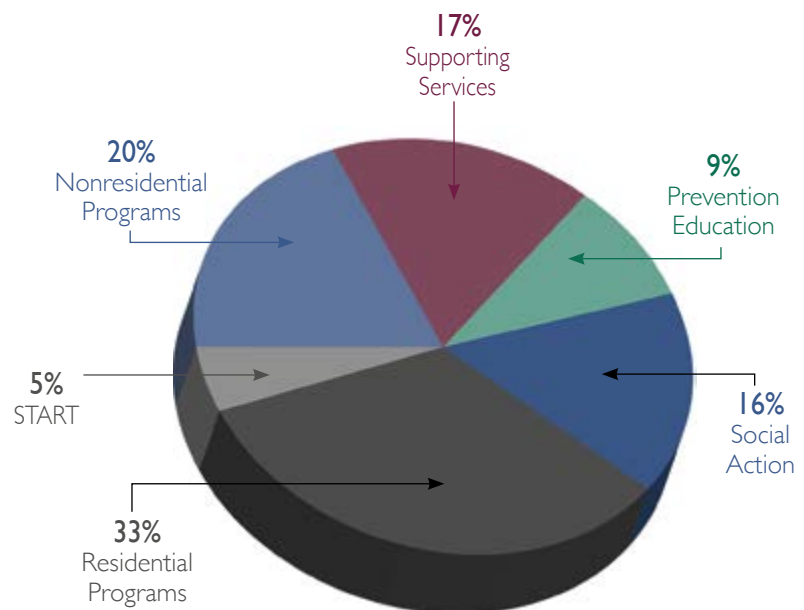
Net assets – beginning of year.....	\$4,088,299
Net assets – end of year.....	\$4,552,173

Note: These preliminary financial statements have not been finalized or approved by the HAVEN Board of Directors at the time of inclusion. (12/31/2013)

In 2013, HAVEN raised **\$3,302,786** in operating funds from these sources:



In 2013, HAVEN spent **\$3,285,396** on operations:



Who supports and pays for HAVEN's services?

There are no charges for clients.

Crisis Services

2013 Costs: **Over \$2.1 million**

Government Funding: **56%**

Private Donations: **39%**

Moving Out of Crisis

2013 Costs: **\$404,000**

Government Funding: **62%**

Private Donations: **32%**

Prevention Education

2013 Costs: **\$280,691**

Government Funding: **40%**

Private Donations: **49%**

Presentation Fees: **Just under 4%**



HAVEN Programming Updates

At HAVEN, we envision a world free from rape and violence and work relentlessly to make our vision a reality. Toward this end, we served even more people through intervention and prevention programs to end domestic violence and sexual assault during 2012/2013. We expanded some of our programs in response to client needs. We also took time to share what we know with others to improve services in the field of violence against women and girls.

Service expansions occurred in nearly every HAVEN program during 2012/2013:

- HAVEN's START program director began providing forensic photography documentation to victims of domestic violence.
- HAVEN created a Legal Services Committee which convenes attorneys who provide pro bono services for victims of domestic violence and sexual assault. These attorneys are especially helpful to victims who do not qualify for other free or low cost legal services in Oakland County
- At our residential program partners including Mercy Place, Lakeshore Legal Aid, Jewish Vocational Services, and Community Housing Network, offered co-located services to survivors.
- Children staying in our residential program were introduced to new fruits and vegetables while spending time in our organic garden.
- HAVEN's Counseling and Social Action programs collaborated with an attorney to provide seminars on "What victims need to know when considering a divorce or separation".
- A meditation room was created for clients seeking to restore inner balance. Small counseling groups also used the room to learn and practice meditation techniques. Yoga designed for survivors also was offered weekly at HAVEN.

At HAVEN, we seek opportunities to share what we know about ending violence with others who share our goals. Toward this end, in 2012/2013:

- HAVEN partnered with the National Organization for Men Against Sexism to co-host the 38th National Conference on Men & Masculinity, "Forging Justice: Creating Safe, Equal, and Accountable Communities." An exciting line-up of speakers from around the United States shared important messages about social justice work to end men's violence against women.
- HAVEN's Social Action program director served on a statewide Jurisdictions of Excellence taskforce through the Prosecuting Attorneys Association of Michigan. This initiative was started by Governor Snyder to make Michigan's cities safer.
- HAVEN partnered with the Oakland Mediation Center to train mediators on recognizing and screening for domestic violence. As a result of this partnership, HAVEN was invited to join the State Court Administration Office taskforce, which is reviewing and rewriting the protocol for mediators who need to assess better for domestic violence.
- HAVEN formed the Farmington Hills High Risk Response Team to increase training and earlier identification of domestic violence cases through risk assessment. This team received a Domestic Violence Prevention Award from the Oakland County Coordinating Council Against Domestic Violence in October 2013.

Capital Campaign

Since 2010 HAVEN has diligently strived towards a new, more effective way to treat and prevent domestic violence and sexual assault. We are proud to share that in the fall of 2013 we reached a significant milestone towards that goal by successfully securing half of the \$5 million in funding necessary to build our new facility! This extraordinary milestone is only possible because of your generous support and the commitment of hundreds of caring community members.

You may recall that in November 2012 we purchased six acres of land near the Oakland County Complex in Pontiac. Since that time we have worked closely with our architectural firm, Stukey Vitale, and have selected Frank Rewold & Son as our construction manager to begin the process of transforming this land into HAVEN's new home. 801 Vanguard Drive will soon be home to a 36,000 square foot facility that provides comprehensive services for victims, their children and the community.



Rendering of the new facility in Pontiac

We also have made great strides to build and strengthen partnerships with law enforcement, legal services, health care providers, employment resources, transitional housing agencies and many others in order to bring more services directly to our clients. Based on a best practice model, these partnerships allow us to continue to strive towards our goal of transforming the way we help victims of domestic and sexual violence. Our new facility will literally wrap victims and their families in the help they need to transition from fear and dependency to safety and independence.

Far from just bricks and mortar, HAVEN's new home will transform the way we work and, more importantly, the way we assist victims of domestic and sexual violence.

Should you have any questions about our ongoing efforts or ways to support our work, please contact Rachel Decker, Director of Development and Capital Campaign at 248-322-3703 or rdecker@haven-oakland.org.

Capital Campaign Contributors at the time of inclusion, 12/31/13

INDIVIDUALS:

Janet Acheson
Ross M. Ainley
Michael & Heidi Ajlouny
Linda C. Allen
Barbara E. Allushuski
Jennifer S. Anderson
John A. Anderson
Paula Andrews
Anonymous
Heather & Steven S. Armstrong
Barry W. & Maggie Barber
David J. & Lisa L. Bartlett
Deborah L. Baughman
Renee J. Baxter
Christine A. Beck & Dana M. Locniskar
Jennifer Belveal
Danielle Benedettini
Pamela & Tony Berklich
Eric R. Beverly
Beth Bialy
Jean K. Bigler
Anna Biliti
Peter J. Bill
Eric M. Boddy
Kyle A. & Jillian M. Boring
Cynthia Brinkley
Sandra C. Brock
Sue Brown & Ashley Paddock
Sue A. Brown
Daniel J. & Beverly A. Buckley
Mary Beth Bullen
Kenneth W. Burns
Marcia & Tim Cairns
Kathryn Calcaterra
Judy B. Calton
Carl Camden & Julia L. Wargo
William Canney
Michael P. Capraro
Ruth B. Carrigan
Teresa Carroll
Mary C. & Tim Caughlin
Beth Chappell
Joseph & Margaret A. Chemello
Mindy Chermey
Camellia Cherri
Jeffrey M. Christofis
Denise L. Christy
Peter G. Chryplewicz
Laura Claeys
Elaine Coffman
Joseph & Sandy Consiglio
Van E. Conway
Martha N. & Timothy J. Corbett
Peggy Cummins
Carol L. Curtis
Kenneth & Karen Dallafior
Dr. Brent & Karen Davidson
Michael E. Debs
Rachel Decker
Jared J. & Jamie L. DeVries
Kimberly Dickens
Audrey P. DiMarzo
Danielle S. Draus
John Dunn

Jane E. Dutton & Lloyd E. Sandelands
Shelly Eddy
Kathy & Jeff Elston
James L. & Carolyn G. Embree
Julie & Greg Erne
Janice G. Faigle
Glen & Sharon Fayolle
Sandra Fester
Jim Fields
Shawn Filas
Bruce A. & Lisa M. Fitzgerald
Suzanne Fodor
Amy B. Folbe
Stanley & Judith Frankel
Michael J. & Nancy A. Frawley
Ronda Fray
Dana Frellick
Larry & Cynthia French
Pam Friedman
Carol A. Friend
Lynn Gandhi
Paige Gannon
Cara & Bradley Gardner
Stephanie Gerrity
Leslie Geupel
Grace Gilchrist
Rosemary Gilchrist
Theresa A. Gizicki
Debra A. Glendening
Maureen Goodin
Meg & Thomas Gordy
Shelley L. Gower
Duane Green
Denise R. & Allen J. Greenway
Cynthia J. Haffey
Kouhaila & Kevin J. Hammer
Kevin & Cassie Hand
Erin Harkness
Douglas E. & Lee Ann Hart
Sara M. Hennig
Susan K. Heritage
Christine & Michael Hilfinger
Janyne M. Hilfinger
Mark E. & Nichole Hilfinger
Shaun & Ashton Hill
Denise L. Hillier
John Hoagland
Ann T. Hollenbeck
Fred & Margie Hubacker
Bonnie D. Huber
Lynne & Chris Huismann
Donna Inch
Mary P. Ivory
Keith & Sherrie James
Daniel & Kathy Jaroshewich
David Jones
Jude Jones
Samuel Jones
Susan M. Jones
Taylor Jones
Barbara A. Kaye
Michele Kelly
Cam Kennedy
Jonathan D. Kidder
Andrea Kindorf

Barry King
Kevin J. Klobucar
Cheryl Korpela
John P. Kotas
Judy Kowalkowski
Matthew B. Kozinski
Anessa Kramer
James & Lucy Kulpa
Laurie Kuper
Glenn Kushiner
Susan Kuypers
Monique R. LeGris
J.T. & Elizabeth Lesnau
Adam & Sara Levitsky
Edward C. Levy & Linda Dresner Levy
Denise J. Lewis
Judee Lewis
Beth Lieberman & Michael Applefield
Carole H. Lieberman Rich
David & Amy Lieberman
Mary Ann & Gerald Lievois
David & Marilyn Lochner
Laura Lockhart
Christina A. Lovio-George
David J. & Mary K. Lychuk
Victor Mack
Donald MacKenzie
Mary Mansfield
Laura A. Marcero
Alicia Masse
Greg Mays
Machelle A. McAdory
Robbin & Scott McCain
Sarah & Mick McClelland
James F. & Mary Jo McDonough
Dr. Frank McGeorge
Nancy L. Meconi
George D. Mercer
Terry Merritt
Daniel D. & Nancy Meyer
Brad J. Michaels
J.T. Mihelick
Chuck & Teri Moore
James M. & Patricia E. Moritz
Beth Morrison
Rick & Lynda Morrone
Martha Runnells Moyer & Mark Moyer
Timothy J. Mullins
Leslie A. & Terry Murphy
Monni Must
Susan Myers
Marja & Jerry Norris
Frank Novak
Susan & Mike Novak
Hedy Nuriel
Danielle & Jason Olekszyk
Brad M. Or
Edward & Pearl Ortner
Mark W. Owen
Ashley Paddock
Demetrios G. & Mimie Papageorgiou
Mark S. Papazian
John & Laurie Parmely
L. Brooks Patterson
Tim & Diana Pendell

Eric F. & Kristen E. Perkins
 Gretchen Perkins
 Susan B. & Lawrence E. Perlin
 Lisa M. Peterson
 Emily Petrovski
 Lara Fetsco Phillip
 Karen R. Pifer
 Teresa & Robert Pollock
 Jonathan M. & Kimberlee A. Pope
 Rick & Sue Popp
 Kathryn A. Pothier
 John & Beverly B. Prior
 Nina M. & Ron Ramsey
 James Y. Rayis
 Robert & Brenda Raymond
 Susan M. Reese
 Douglas A. & Kimberly Reich
 Julie E. Robertson
 Patrice L. Rodkey
 Lynda Ronie
 Rodger Rooney
 Linda S. Ross
 Kirk Roy
 Gail G. & John Sanderson
 Michael J. Schenden
 Jill Schloff
 Brian & Angie Schmucker
 Patrick Schullo
 Thomas J. & Andrea L. Schwartzberger
 Steven H. & Mary P. Sclawy
 David & Cynthia Senatore
 Frank & Andrea Sesi
 Steve Shanker
 Sharona Shapiro
 Tricia A. Sherick
 Bradley M. Simmons
 Marjorie K. Simmons
 Kimber L. Small
 Rachel A. & Peter J. Smidt
 Paul W. Smith
 Rebecca R. Smith
 Paul Smithivas
 David & Shannon Sokol
 Robert S. & Brenda K. Sonneveldt
 Troy Springer
 Dr. Joyce Stuart
 Kristen A. Stumpo
 Brenda Swallow
 Leslie Swanson
 Lori J. Szymanski

Ronald A. & Gloria L. Tachuk
 Howard A. & Patti R. Taxe
 Susan & Raj Telang
 Tracy L. Thomas & George Markley
 Paul & Gay Tosch
 Mary Ann Tourmoux
 Thomas L. & Karen A. Treppa
 Donna C. Turner
 Debra E. & Kent D. Uygur
 Jon M. Vigi
 Cheryl Vogelmeier
 Jeff & Gloria A. Waltz
 Gary Ward
 Donald Warwick
 Robert P. & Deborah M. Washer
 Linda A. Wasserman
 Robert G. Weisenburger
 Dianne Wells
 Sherry Welsh
 Kathleen M. & Bill White
 Barbara L. & David Whittaker
 Dennis Winkler
 Carole Winnard Brumm & Gregg Brumm
 Ronald Wood
 Marsha M. Woods
 Judith A. Wright
 Leroy H. & Marcia A. Wulfmeier
 Pamela & Todd Wyett
 Nancy & Wesley Yee
 Helaine Zack

FOUNDATIONS:

Carls Foundation
 Community Foundation of Greater Rochester Women's Fund
 General Motors Foundation*
 *Provided programmatic support.
 Keith A. Iverson Living Trust
 Kresge Foundation
 Lila Cherri Foundation
 McGregor Fund
 Phyllis D. Korn Living Trust
 The Ajemian Foundation
 The Baskin Family Foundation
 The Ruby McCoy Foundation
 The Skillman Foundation
 William G. & Myrtle E. Hess Foundation

CORPORATIONS:

Advanced Land Development Co., LLC
 Art Van Furniture

AXA Foundation
 Bill Brown Ford, Inc.
 Columbia Center II Association, LLC
 Columbia Center, LLC
 Cooper Standard
 D. Locniskar & Associates
 Detroit Lions Courage House
 Different by Design
 Federated Campaign Stewards
 Great Lakes Cremation, Inc.
 Helm Realty Partners LLC
 Herman Miller, Inc.
 Hopeline
 Huntington National Bank
 iscg Workplace Inspired
 James J. Williams & Associates, PLC
 JC Belle Group, LLC
 JRM Holdings, LLC
 Kil's Tae Kwon Do
 Ladies of Conway MacKenzie
 Law Office of David G. Gorcyca PLLC
 Lloyd's of Novi LTD
 Maclean Maynard
 Mascari-Florida, Inc.
 Masco Corporation
 Michigan Business and Professional Assn.
 Midwest Supply & Maintenance Co., Inc.
 Morgan Stanley
 N.W. Schlafli, Inc.
 NAI Farberman
 Nelson Mill Company
 Northern Trust Bank
 Park West Gallery
 Pepsi Beverages Company
 PM Environmental
 Quicken Loans
 Ringler & Co., PC.
 Santeiu Vaults, Inc.
 Spillane & Reynolds Orthodontics
 Team LeGris-Marcero-Uetz
 The Jewish Fund
 Tip Capital
 Trott & Trott, PC.
 Verizon Wireless
 Walnut Creek Country Club
 Women Equity Partners of Honigman
 Women Partners of Plante Moran
 Woodbank Group

Your Support is the Root of Hope

Safety is a fundamental human need, as much as food and shelter. The new home for HAVEN will provide the foundation to meet that need now and for future generations. At the same time, this new home is more than just a building. It is a new way for HAVEN to work. It is a way that will allow us to not only make a greater impact on the lives of those we treat and educate, but also on the lives of our entire community. This will put us closer to our ultimate goal of eliminating domestic violence and sexual assault for good.

We Gratefully Acknowledge Our Supporters: October 1, 2012 - September 30, 2013

\$50,000 +

Detroit Lions Courage House
Phyllis D. Korn Living Trust
McGregor Fund
United Way for Southeastern Michigan

\$10,000 - \$49,999

Ally Bank
Conway MacKenzie
Cooper Standard
Clare Dusevoir Trust
Ford Motor Credit Company
Kelly Services, Inc.
Lear Corporation
Macy's
MGM Resorts Foundation
RBS Citizens Foundation
Towers Watson
Young Foundation

\$5,000 - \$9,999

Anonymous
Bank of America Charitable Foundation Inc.
Cebelak Foundation
Dickinson Wright PLLC
First Presbyterian Church of Birmingham
Gamma Phi Beta
General Motors Foundation
Health Alliance Plan
Independent Insurance Agents of Oakland County
Edward & Sharon Karas
Knasiak Memorial Golf Outing
John R. & Nancy Ludwick
Lyon Foundation
Michael & Peggy Pitt Charitable Trust
Michigan State Bar Foundation
Pepsi Beverages Company
Quicken Loans
SHW Group
The Ajemian Foundation
The Private Bank
The TJX Foundation Inc.
The Wilshire Financial Group
Van Pelt Corporation
Mary Ann & Robert Victor
Dave M. & Lori Wathen
William G. & Myrtle E. Hess Foundation
Young Woman's Home Association

\$2,500 - \$4,999

Acro Service Corporation
Alix Partners
Anonymous
Christine A. Beck & Dana M. Locrniskar
Blue Cross Blue Shield of Michigan
Paul Bosco
Carnegie Institute, Inc.
Christ Church Cranbrook
Clannad Foundation
Michael P. & Janice M. Corrigan
Sean Paul & Nancy E. Cotton
Elizabeth L. & Richard I. Cushman
Kenneth & Karen Dallafior
Kimberly Dickens
DTE Energy Foundation
Kathy & Jeff Elston

Faurecia North America
Fidelity Charitable Gift Fund
Michelle Gilbert
Meg & Thomas Gordy
Allen J. & Denise R. Greenway
Group Associates
Honigman Miller Schwartz & Cohn
Jack & Jill of Oakland County
Kolo Charities
Level One Bank
Sarah & Mick McClelland
Mercedes-Benz Financial Services
MGM Grand Detroit Casino
Michael & Candice B. Mihalich
Network For Good
Northern Trust Bank
Susan B. & Lawrence E. Perlin
Plante & Moran, PLLC
Daniel L. & Gail A. Rabahy
Rochester Hills Chrysler Jeep
Howard S. & Sarine Rosman
Robert & Janice Ross
Schwab Charitable Fund
St. John Health System Providence
St. Joseph Mercy Oakland
Stucky/Vitale Architects
Kevin P. & Lydia E. Stutler
UBS Financial Services, Inc.
United Way of Metropolitan Dallas
United Way (Other)
Versa Development

\$500 - \$2,499

Jeffrey Addison
Advent Episcopal Church
Thomas J. & Elizabeth G. Alexander
Anonymous
Ali-Reza & Nahid Armin
Heather & Steven S. Armstrong
AT&T United Way / Employee Giving Campaign
Autodesk
Autoliv
Edward & Beverly Avadenka
Mark Avery
Avis Ford
Lauren & Thomas J. Azoni
Banas and Associates, PLLC
Evelyn R. Barrack
Geraldine Barrons
Judith L. Bateman
BBK
Beaumont Hospital Domestic Violence Committee
A. Lori Beirne-Kennedy
Gerald & Karen Beltry
Birmingham Bloomfield Chamber of Commerce
Birmingham Unitarian Church
Brass Craft Industrial Products
Bill & Barbara Brown
Shari Burgess
Karen L. & Mark Burstein
Burton Share Management
Allen Campbell
William Canney
Nanette C. Casida
Beth Chappell
Charity Motors

Betsy & Michael Chen
Kathy Chiaravalli
Children's Hospital of Michigan Foundation
Chrysler Advance Stamping Manufacturing Engineering
Chrysler Corporation
Chrysler Group LLC
Church of the Resurrection
City of Farmington Hills
Club General Motors
Comer Foundation
Comerica Bank
Nikki Courtney
Crestmark Bank
Amy Cronin
Croskey Lanni
Julie Curtin
Brent & Karen Davidson
Brian & Debra S. Dietz
Elizabeth A. Dillon
Patrick M. & Jill T. Dimet
Anne J. Doyle
Seema Dulai
Marianne Dwyer
Dykema Gossett PLLC
Ed Block Courage Award Foundation
Monica Emerson
Epiphany Studios
Julie & Greg Erme
Elias J. & Amelia R. Escobedo
Stuart & Bonnie Etengoff
Lowe Campbell Ewald
Mike & Tracey Ewing
Farmington Hills Church of God
Federated Campaign Stewards
Alan J. & Sharon Ferrara
First Presbyterian Church
First Presbyterian Church of Royal Oak
Linda & Terry Fiscus
Tony Flanagan
Francis J. & Meg Fleck
James & Alice Forrest
Karol Foss
Virginia B. Fox
Alan W. & Ann L. Frank
Gap Foundation Gift Match Program
Jane Gardner
George W. Auch Company
Kevin & Kim Gerald
Leslie Geupel
GHAFARI Associates, LLC
GKN Driveline North America, Inc.
Global Impact
Gilbert C. Goode
Ron Goodman
Great Lakes Crossing Outlets
Allen J. & Denise R. Greenway
Grimaldi Foundation
Rene M. Hansemann
Ellen Harris
Fritz & Holly Hudson Hatt
Blake Hattermann
Terry A. Hauer
Henry Ford Health System
Jennifer Hichme
Leslie Hinson
Annette & Edward Holder

Kathy B. Holmes
Tricia & Tom Huneke
IBM Employee Services Center
Donna Inch
Islamic Association of Greater Detroit
Mark A. Jackson
Brandon & Mary Jacobs
Jaffe, Raitt, Heuer & Weiss, P.C.
James and Lynelle Holden Fund
Pamela D. Johnson
Debra L. Jordan
JP Morgan Chase & Co.
Patricia M. Kasiewicz
William L. Keller
Karen Kienbaum
Thomas A. & Kathryn Klingler
Kresge Foundation
Kroger
Sara Kruse
Jack D. Lennox
Lori & Mark G. Lesperance
Edward C. Levy & Linda Dresner Levy
Paul L. & Lynn M. Lieberman
Vicki Liebowitz
Mary Ann & Gerald Livois
Lincoln of Troy
Marilyn & David Lochner
Logicals Integration Solutions
John & Donna LoVasco
Susan Lundal & Donald M. Crawford
John W. & Linda W. Luther
Susan D. & Bill Luther
Lutheran Church of the Master
Carole Condevaux MacLean
Peter R. & Mary T. Mahu
Mann Family Foundation
MarkV Automotive
Alicia Masse
Kelli B. Matthew
Machele A. McAduory
Robbin & Scott McCain
John McLaren
Terry Merritt
MGA Research Corporation
Michigan Reproductive Medicine
David Milburn
Miner's Den
John J. & Kandy J. Molesphini
Chuck & Teri Moore
Pamela Mooman
Sylvia Morin
Valencia Morris
Beth Morrison
Ms. Molly Foundation
Gregory V. & Bridget M. Murray
Laura & Chuck Nadeau
Lesla Nash
National Benefit Plans, Inc.
National Christian Foundation of Eastern Michigan
Stephanie Nehls
Marja & Jerry Norris
North Congregational Church
North Hills Christian Reformed Church
Oakland University
Oakland University Athletics
Danielle & Jason Olekszyk

O'Neill Foundation	Thrivent Financial for Lutherans	James E. & Marguerite M. Donahue	Morgan Stanley
Orchard Lake Community Presbyterian Church	Mara R. Topper	Susan D'Orazio	Judy A. & Dennis Muhn
Orchard Pediatrics, P.C.	Mary Ann Tournoux	K. Scott Doyle	Jaspal Neelam
Margaret O'Sullivan	James & Frances Trask	Employee Events Committee	Joni Nelson
Ashley Paddock	Travelers Community Connections	Mike Farley	New To You Shop
Padilla Law Group	Pamela R. Travis	Nancy Farnam	Northwest Unitarian Universalist Church
Margie & Tom Parker	Marilyn & James Tutorow	Rachel Ferhadson	Oakland County Clerk's Office
Sheri & Todd Pawlik	Connor Tweedle	Cynthia L. & George Fetsco	Oakland County Prosecutor's Office
Susan Peludat	United Methodist Women	Jim Fields	Susan & Jay Pepper
Pepper Hamilton LLP	United Way of Central & Northeastern Connecticut	Kathy Frederickson	Erica Peresman
PepsiCo Foundation	United Way of Central Indiana, Inc.	Susan Galantowicz	Lara Fetsco Phillip
Jennifer E. Piscopink	United Way of Greater Milwaukee	Joseph & Jennifer Gasko	Plymouth Technology, Inc.
Ellen K. Poe	United Way of Greater Philadelphia	GE United Way Giving Campaign	Dorothea T. & Ed Pomfret
Preeede Foundation	United Way of Rhode Island	Howard B. & Janice S. Goldman	Real Estate Gives
PTA of IA East	Lawrence J. Usher	Golling Buick GMC	Alan A. & Mary Ann Reidinger
Steven & Carol Pyykkonen	Village Of Lake Orion	Gwen Gonzalez	Marla Rodgers
Nina M. & Ron Ramsey	Walbridge	Dean & Nina Googasian	Phillip Rodriguez
Stephen E. & Jeannine M. Rawe	Walled Lake Elementary	Beth S. Gotthelf	Kirk Roy
Janice L. Reed	Ursula Warren	Cynthia Granby	Joseph & Rachel Ruzyci
Reliance One, Inc.	Bonnie S. Weinstein	Kent Grathwohl	Kristen Sandstrom
Renaissance Unity	Joan & Richard C. Wells	Patricia & Sherwood Gregory	Janice Sanecki
Kevin C. Rettich	Todd H. & Julie A. Wells	Tom & Elizabeth Griffith	Donald S. & Margaret J. Sarna
Frank H. Rewold	Wilmot F. & Wanda Wheeler	Stuart Grigg	Carla & Paolo Sarti
Frank Rewold and Son, Inc.	Barbara L. & David Whittaker	Carissa Hagstad	Lisa Scaccia
Gwen M. Rhodes	William H. Smith & Patricia M. Smith Foundation	Karin Halstead	Elizabeth A. Schensky
Sharon Richard	Carole Winnard Brumm & Gregg Brumm	Jennifer Hammond	Geraldine Schinzel
Rochelle & Randolph Forester Foundation	Wolfson Bolton PLLC	Kevin & Cassie Hand	Franz & Debra Schmelzer
Amanda & Michael A. Rohda	Women In Cable Telecommunications	Kristin Handley	Curtis J. Schoenjahn
Lynda Ronie	Ronald Wood	Kathy & Larry Haras	Jill Schubiner
Ann & Mike Rosenthal Family Foundation	Michelle Woolhiser	Lisa Harrison	Susan W. & Darrel M. Schwandt
Fredric E. & Susan J. Roth	Lawrence B. & Martha J. Wright	Judi Helm	Judith Schwarzer
Roy G. Michell Charitable Foundation & Trust	Xemplar Club	Danielle Hessel	Iain & Alice J. Scott
Royal Oak Lions Club	Zonta Club of Pontiac- North Oakland	Deborah Howard	Ronald C. Sheets
Dave & Sue Ruby		Jason & Jessica Howard	Margaret Shimkus
Meghan Rundell	\$250 - \$499	Mary Hyde	Robert M. & Eleanor A. Siewert
Ruth J. Butterfield Trust	AAUW Birmingham Branch	Scott & Angela Janssen	Russell & Carla M. Smaston
Samuel L. Westerman Foundation	Allstate Giving Campaign	Yasmeen Jasey	Marilyn Smith
William & Kathleen Schaefer	American Federation of Government Employees	Levon Kayser-Shook	David & Shannon Sokol
Anthony J. Scooros	Anonymous	Mitch & Carol Klein	Ron D. Souza
Laura Segal	John B. & Peggy A. Aoun	Bill & Debbie Korte	St. Anne Church
Shelter Alliance	William & Kim Avery	Rick & Marilyn Kress	Ann & Andreas Steglich
Bill & Mickey Shield	Bank of America United Way Campaign	William M. & Jean E. Kroger	Betty Steinke
Bradley M. Simmons	Barron Industries, INC.	Mandy Lark	Sterling Bank & Trust
Kimberly A. & Doug Sinclair	Barbara E. Battle	Laurel Women's Medical Group	Melissa Stewart
Judy Snyder	Beaumont Hospitals	Lawrence Technological University	Jim Stowe
SuSu Sosnick	Suzanne K. Berletich	Beth Lieberman & Michael Applefield	Jason A. & Kelsey V. Switzer
Lisa Speck	Kanta J. Bhamhani	Christine M. Limb	Sylvan Lake Lutheran Church
St. Anastasia Church	Big Beaver UMC	Judith T. & Peter M. Lipinski	Geneva Tatem
St. Mary's Preparatory	Blitz-Lafer Corporation	Patricia Little	Patricia A. Tattie
St. Paul's United Methodist Women	Avis M. Broussard	Mary Louwers	The Athena Financial Group
Steel Foundation	Sha W. Buikema	Sandra Macdonald	The McGraw-Hill Companies
Cathy & Pat Stewart	Marcia & Tim Cairns	Timothy & Carol Madden	The Washington Post Company Matching Gifts Program
Christopher Stoddard	Susan L. Carey	Saida Malarney	Mary Ellen Tonis
Jeffrey Styers	Central United Methodist Church	Kirk N. & Kathy Martin	Leslie A. Tourna
Janice L. & Kevin Suchan	Charter Township of Orion	Sara Marx	Michael M. & Roberta S. Trzos
Patricia Surd	Camellia Cherri	Barbara J. McCarter	Sharon Ulep
Synergy Installation Solutions	Lila Cherri	Caroline M. McCollom	United Way of Greater Portland
Susan & Raj Telang	Christ the Redeemer Catholic Church	Lance & Susan McCracken	Paul G. & Robin L. Vandevelde
The Bon-Ton Stores, Inc.	Clark Hill	Cathy McNamara	Vehma International
The Daniel Foundation, Inc.	Clarkston Community Schools	Frederick W. & Carol S. Melamed	Walled Lake Consolidated Schools
The Emergency Room Physicians of Botsford Hospital	The Clorox Company Foundation	Mentors of Michigan, Inc.	Stuart Weiner
The Qazi Foundation	Donna E. Cukrowski	Michael S. & Mary Jo Mersol-Barg	Steven & Lori D. Weisberg
The Skillman Foundation	Carol L. Curtis	Kevin & Carolyn Miller	Fred & Mary Ann Wendell
The Taubman Company, LLC	Jon P. Dady & Jane Bowman Dady	Modern Obstetrics & Gynecology	Diane Willard
The Village Woman's Club Foundation	Jean Dalton	MOMS Club of Madison Heights	YourCause, LLC

Amounts are based on cumulative giving from October 1, 2012 through September 30, 2013 above \$250. While we are grateful for all gifts, space does not allow us to list every donation we receive. HAVEN also gratefully recognizes the support of our more than 629 in-kind donors, whose donations of items and services totaled more than \$255,500. Philanthropic support is very important to us and we make every effort to ensure there are no omissions or misspellings. Please forgive any oversights and contact us so that we may amend unintentional errors.



2013 Board of Directors

Terry Merritt
Chairperson

Carole Winnard Brumm
1st Vice Chair

David Sokol
2nd Vice Chair

Machelle A. McAdory
Secretary

Susan B. Perlin
Treasurer

James M. Mortiz
Immediate Past Chair

Beth Morrison
President & CEO

William H. Canney, Jr.
Brent N. Davidson, M.D.
Kathryn Elston
Marguerite Gordy
Leslie Geupel
Donna Inch
Beth Lieberman
Mary Ann Lievois
Christina Lovio-George
Victor A. Mack
Robbin McCain
Charles Moore
Marja Norris
Danielle Olekszyk
Lara Fetsco Phillip
Nina M. Ramsey
Carole Lieberman Rich
Troy Springer, Jr.
Susan M. Telang
Mary Ann Tournoux
Barbara L. Whittaker
Ronald Wood



Crisis and Support Line

Local: 248-334-1284
Toll free: 877-922-1284
TTY: 248-334-1290

HAVEN Business Office

30400 Telegraph Road, Suite 101
Bingham Farms, MI 48025
Business Office: 248-334-1284
Business Office Fax: 248-334-3161

www.haven-oakland.org
Facebook: [havenonline](https://www.facebook.com/havenonline)
Twitter: [@HAVEN_Oakland](https://twitter.com/HAVEN_Oakland)

HAVEN locations:

Bingham Farms
Pontiac (2)
Royal Oak